

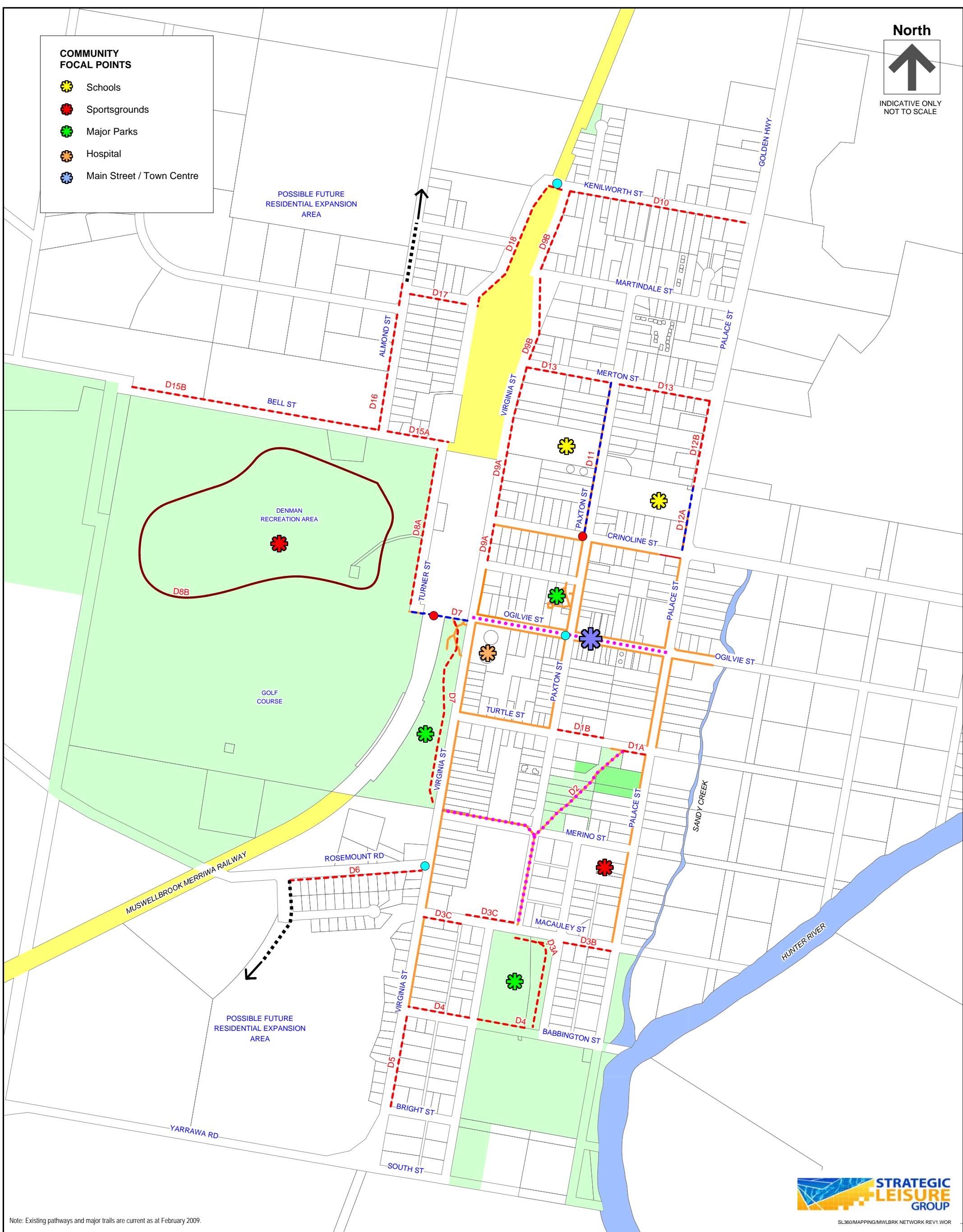
North



INDICATIVE ONLY  
NOT TO SCALE

**COMMUNITY FOCAL POINTS**

- Schools
- Sportsgrounds
- Major Parks
- Hospital
- Main Street / Town Centre



Note: Existing pathways and major trails are current as at February 2009.



SL360/MAPPING/MWLBRK NETWORK REV1.WOR



**MUSWELLBROOK SHIRE COUNCIL**  
Walk and Cycle Plan for  
Muswellbrook and Denman

MAP B1 - Proposed Walk & Cycle Network  
[Denman Township]

**EXISTING FACILITIES**

- Existing Paths
- Open Space / Recreation (Public)
- Open Space / Recreation (Private)
- Existing Cycle / Ped Crossing

**PROPOSED FACILITIES**

- New Off-Road Path
- Path Upgrade
- Recreational Trail
- Path Closure
- On-Road Bikeway
- Strategic Ped / Cycle Route
- Upgrade Route Signage
- New or Upgraded Crossing Point