

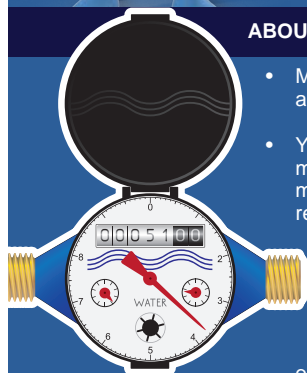
Howdy,
I'm Wilbur The
Water Warrior.
EVERY DROP
COUNTS



ABOUT your WATERMETER

A lot of the water consumed by a household is actually lost to leakage. There are some key things that you can do to record your usage and save water:

ABOUT YOUR WATER METER



- MSC currently reads meters three times a year.
- You are responsible for keeping your meter free from obstruction to let our meter readers get easy access for reading.
- Meters need to be maintained at 300mm above ground level.
- If the meter readers cannot read your meter for any reason, our operational staff will be sent out to make repairs or replacements as necessary.

- If you need to turn off your water supply you can use the stop tap normally located on your water meter.

Use your water meter to **check for leaks**. Record the reading on your water meter and ensure no water is used on the property for a few hours and then check the meter again. Take into consideration if your hot water system is filling, or if dishwashers, washing machines or garden irrigation are in use, or on timers. Any movement of the dials (including both red and black numbers) on your water meter after this time indicates there may be a leak on your property. You should then contact a plumber to have it found and repaired, as **MSC is not responsible for the pipes on your property from the meter**.

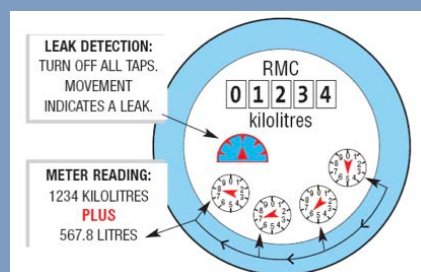
How to read your meter

The water meter measures the amount of water each property uses so Council can calculate your bill. There are many types of water meters. Meter reading examples are below:



If your meter looks like the one above, read the black and red numbers left to right. The black numbers show how many kilolitres (1,000 litres) have been used. The red numbers show how many litres have been used. Only the kilolitres are represented on your Council water bill.

If your meter looks like the one below, kilolitres are represented by the black digital display, and litres by the dials. The dials are read from right to left. When a pointer rests between two numbers read the lower number.



If you believe that your meter is not reading correctly, you can ask Council to test the meter for you. Meters are guaranteed to read accurately within 5% of the true usage. If your meter is found to be inaccurate, Council will refund you the cost of the test, and will replace your meter (a fee does apply).

For more information on saving water in your garden contact your local Landcare group, Local Council, Land Services or native plant nursery.

Please contact Muswellbrook Shire Council for further information



(02) 6549 3700



(02) 6549 3701



council@muswellbrook.nsw.gov.au



muswellbrook.nsw.gov.au



157 Maitland Street Muswellbrook 2333



P.O. Box 122 Muswellbrook 2333



muswellbrook shire council