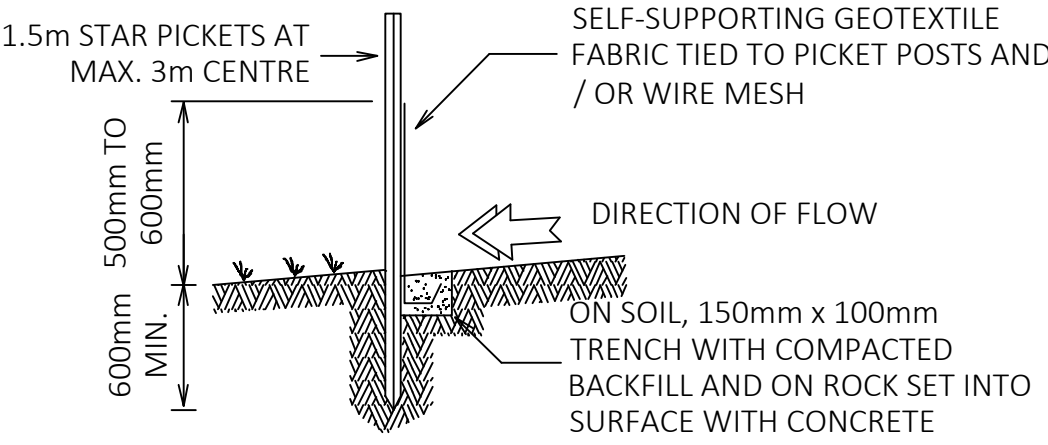
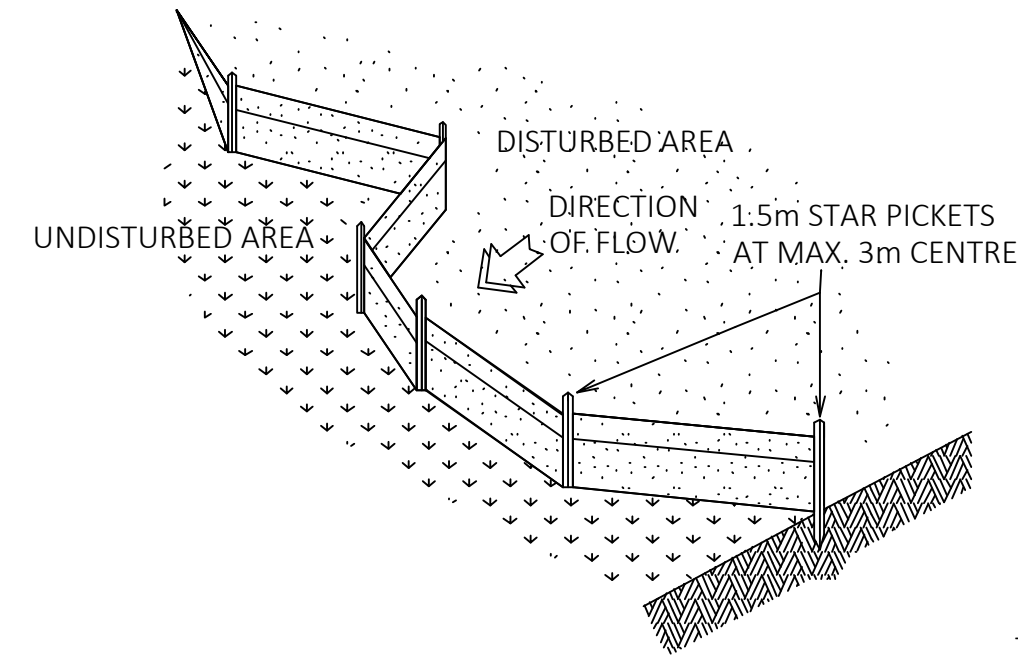


- EROSION AND SEDIMENT CONTROL
- THE NOTES AND MEASURES STATED HEREAFTER SHALL BE READ IN CONJUNCTION WITH THE NSW PUBLICATION "MANAGING URBAN STORMWATER, SOILS & CONSTRUCTION, FOURTH EDITION 2004 VOLUME 1" PREPARED BY LANDCOM. PARTICULAR ATTENTION SHALL BE PAID TO CHAPTERS 6 & 8.
 - EROSION AND SEDIMENT CONTROL MEASURES SHALL BE IN PLACE PRIOR AND DURING THE CONSTRUCTION PERIOD. THESE CONTROL MEASURES SHALL BE INSPECTED AND MAINTAINED REGULARLY BY THE CONTRACTOR TO ENSURE THE EFFECTIVES OF THE SYSTEM, ESPECIALLY AFTER STORM EVENTS.
 - ALL NECESSARY WORKS SHALL BE CARRIED OUT TO PREVENT EROSION, CONTAMINATION AND SEDIMENTATION OF THE PROJECT SITE AND ADJACENT PROPERTIES AND DRAINAGE SYSTEMS.
 - MINIMISE DISTURBED AREAS COVERED WITH NATURAL VEGETATION, ONLY THOSE AREAS DIRECTLY REQUIRED FOR CONSTRUCTION ARE TO BE DISTURBED.
 - DIVERT CLEAN WATER FROM UNDISTURBED AREAS AROUND THE WORKING AREAS.
 - ADOPT TEMPORARY MEASURES AS MAY BE NECESSARY FOR EROSION AND SEDIMENT CONTROL, INCLUDING BUT NOT LIMITED TO THE FOLLOWING :
 - DRAINS - CONSTRUCT TEMPORARY DRAINS AND CATCH DRAINS
 - CONSTRUCT SPREADER BANKS OR OTHER STRUCTURES - DISPERSE CONCENTRATED RUN-OFF
 - SILT TRAPS - CONSTRUCT AND MAINTAIN SILT TRAPS TO PREVENT DISCHARGE OF SCOURED MATERIAL TO DOWNSTREAM AREAS
 - TEMPORARY FENCING - CONSTRUCT, MAINTAIN AND KEEP IN GOOD REPAIR ALL SILT AND WIND FENCES. CHECK AND CLAEN FENCES FOLLOWING RIN AND STORM EVENTS
 - REMOVE TEMPORARY EROSION AND SEDIMENT CONTROL MEASURES WHEN THEY ARE NO LONGER REQUIRED
 - ALL DISCOLOURED WATER SHALL BE TREATED TO EPA TANDARDS PRIOR TO DISCHARGE OFF SITE, OR ALTERNATIVELY REMOVED BY TANKER WITH A LICENSED TRADE WASTE COLLECTOR
 - ALL STORMWATER INLET PITS ARE TO BE PROTECTED FILTER FABRIC DROP INLET SEDIMENT TRAPS OR GRAVEL SAUSAGE, WHICH IS BLUE METAL WRAPPED IN GEOTEXTILE FABRIC.
 - STOCKPILED MATERIALS SHALL BE KEPT WITHIN THE SITE BOUNDARIES IN A POSITION NOT VULNERABLE TO CONCENTRATED SURFACE RUNOFF.

- DUST CONTROL:
- DUST IS TO BE WELL CONTROLLED ON THE CONSTRUCTION SITE AT ALL TIMES, ESPECIALLY AT EXCAVATIONS, DEMOLITION ETC.
 - WATER SPRAY TO BE USED TO CONTROL DUST ON DIRT/GRADED AREAS ONLY.
 - CARE TO BE EXERCISED TO ENSURE WATER SPRAY DISPENSE ONLY SUFFICIENT WATER FOR DUST CONTROL PURPOSES.
 - CARE TO BE EXERCISED TO ENSURE ONLY OPTIMIUM MOISTURE CONTENT OF THE SOIL IS REACHED FOR COMPACTION.
 - FOR CONTROLLING DUST ON PAVED FOOTPATHS, A SWEEPER IS TO BE USED WITH WATER-JET SPRAYERS.
 - NO SURFACE WATER RUN-OFF IS TO BE GENERATED.
 - CARE IS TO BE EXERCISED TO ENSURE ONLY SUITABLE AMOUNTS OF WATER IS USED DURING SWEEPING.
 - NO RUN-OFF FROM SPRAYERS TO FLOW INTO CATCH BASINS.
 - MIMINISE THE AREAS OF EXISTING VEGETATED AREA THAT ARE DISTURBED DURING CONSTRUCTION.
 - AREAS NOT BEING WORKED ON FOR 30 DAYS OR MORE ARE TO BE VEGETATED OR COVERED TO AVOID DUST GENERATION.
 - SAND & SOIL STOCKPILE ARE TO BE SUFFICIENTLY COVERED DURING WEEKENDS AND AT TIMES WHEN WINDY CONDITIONS PREVAIL.

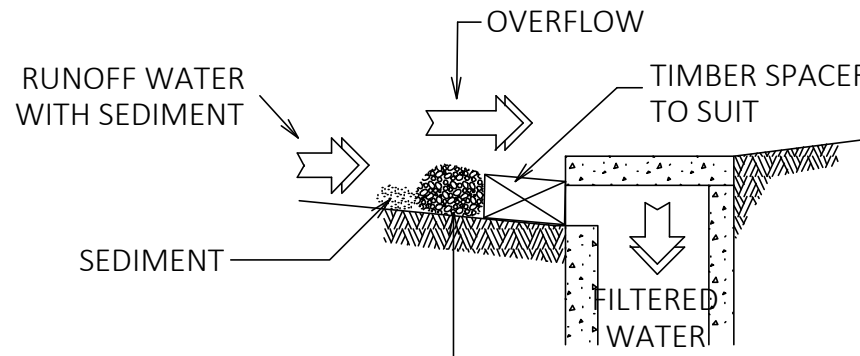


SECTION VIEW

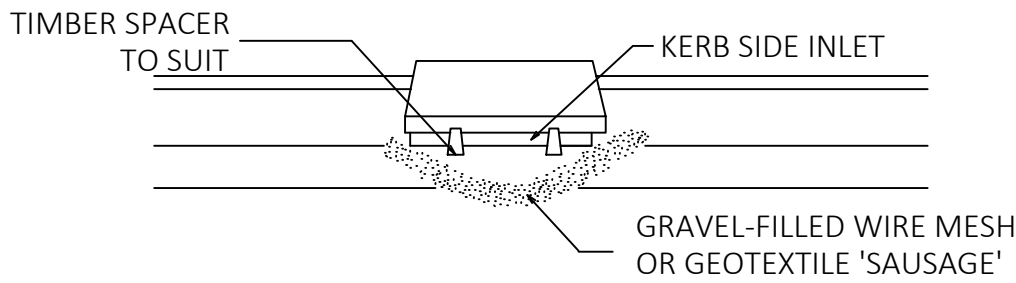


SEDIMENT CONTROL FENCE
NOT TO SCALE

- CONSTRUCTION NOTES :
- FABRICATE A SLEEVE MADE FROM GEOTEXTILE OR WIRE MESH LONGER THAN THE LENGTH OF THE INLET PIT
 - FILL THE SLEEVE WITH 25mm TO 50mm GRAVEL
 - FORM AN ELLIPTICAL CROSS-SECTION ABOUT 150mm HIGH x 400mm WIDE.
 - PLACE THE FILTER AT THE BEGINNING OF THE KERB INLET LEAVING A 100mm GAP AT THE TOP TO ACT AS AN EMERGENCY SPILLWAY.
 - MAINTAIN THE OPENING WITH SPACER BLOCKS.
 - FORM A SEAL WITH THE KERBING AND PREVENT SEDIMENT BYPASSING THE FILTER.
 - FIT TO ALL KERB INLETS AT SAG POINTS.

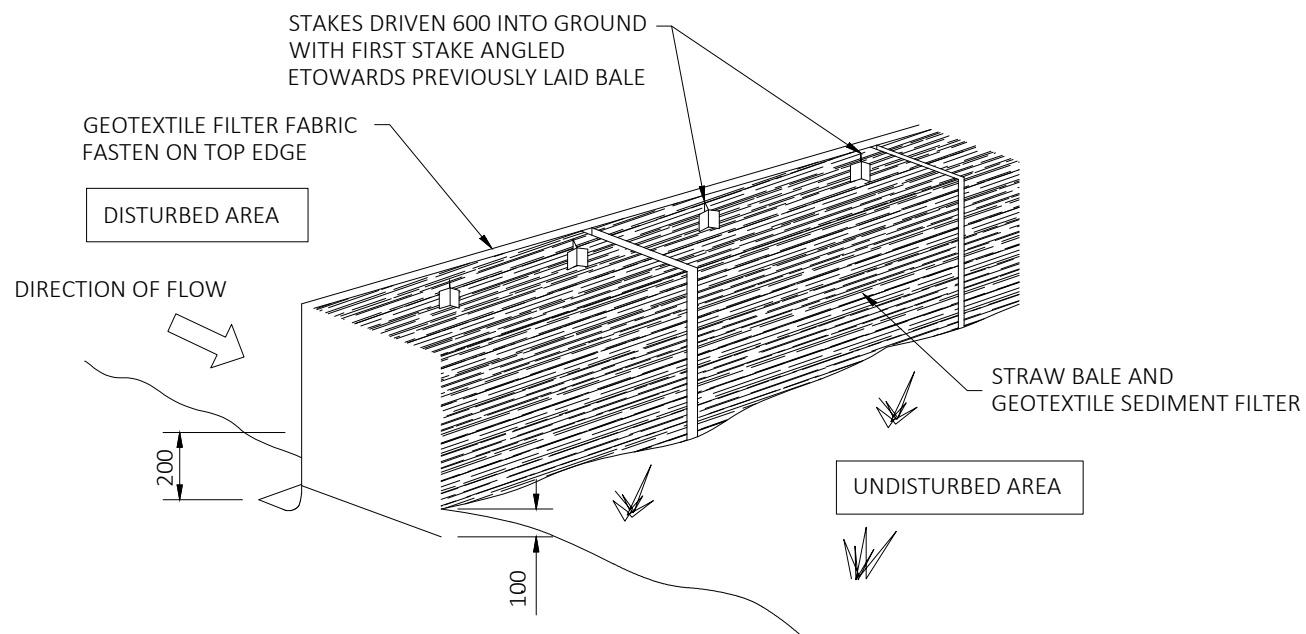


SECTION VIEW

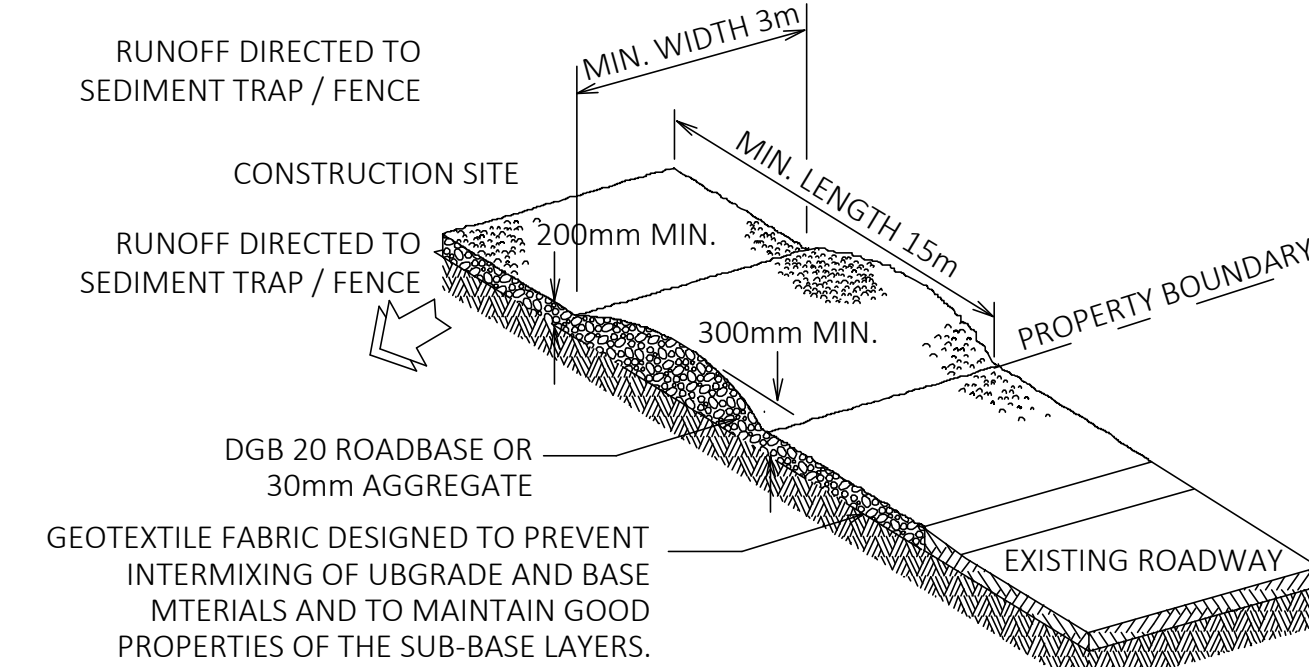


MESH AND GRAVEL INLET FILTER
NOT TO SCALE

- CONSTRUCTION NOTES :
- STRIP TOPSOIL AND LEVEL SITE.
 - COMPACT SUBGRADE.
 - COVER AREA WITH NEEDLE PUNCHED GEOTEXTILE.
 - CONSTRUCT 200mm THICK PAD OVER GEOTEXTILE USING ROADBASE OR 30mm AGGREGATE MINIMUM LENGTH 15m OR TO BUILDING ALIGNMENT. MINIMUM WITH 3m.
 - CONSTRUCT HUMPS IMMEDIATELY WITHIN BOUNDARY TO DIVERT WATER TO A SEDIMENT FENCE OR SEDIMENT TRAP.



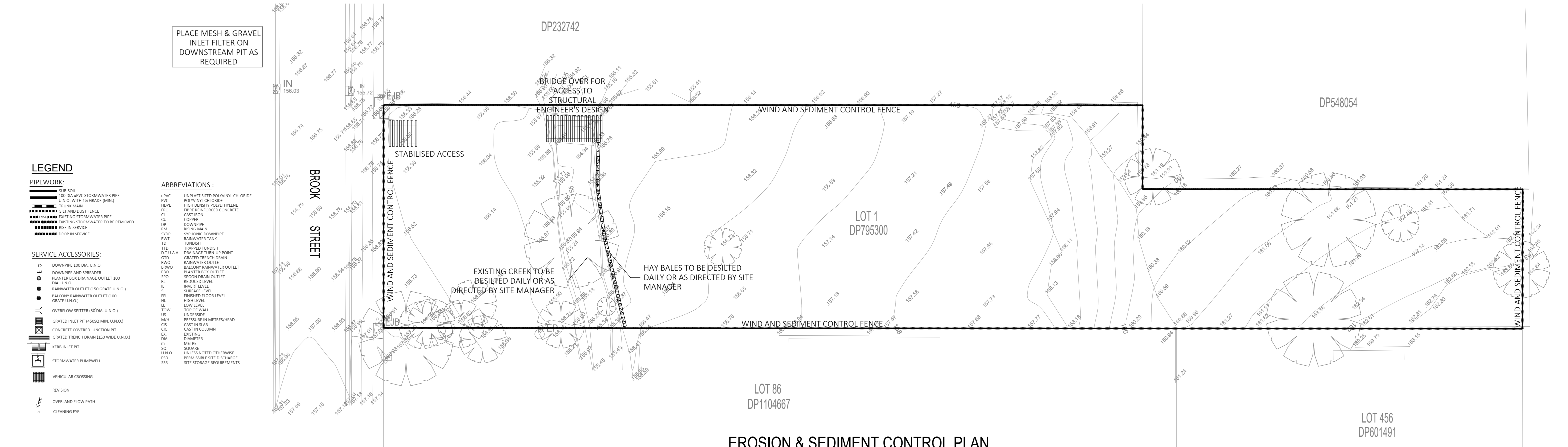
STRAW BALE DETAIL
NOT TO SCALE



GEOTEXTILE MAY BE WOVEN OR NEEDLE PUNCHED PRODUCT WITH A MINIMUM CBR BURST STRENGTH (AS3706.4-90) OF 2500N

STABILISED SITE ACCESS
NOT TO SCALE

NOT FOR CONSTRUCTION



EROSION & SEDIMENT CONTROL PLAN

SCALE 1 : 200

Copyright
This document is & shall remain the property of ING Consulting Engineers Pty Ltd. The document may only be used for the purpose for which it was commissioned. They must not be used, reproduced, or copied in whole or in part without prior written consent of that company.

VERIFY ALL DISCREPANCIES WITH PROJECT ARCHITECT/MANAGER PRIOR TO PROCEEDING WITH ANY WORKS. **Do not scale off drawings.**

			Drawn & Designed by: K. Koh		Project Proposed Childcare Centre	Drawing Title Erosion & Sediment Control Plan	
			Checked by: N. Evans			Date May 2023	Scale As Shown @ A1
			Approved by: Kenneth T. NG MIEAust CPEng NER APEC Engineer MPE(Aus) (Reg. No. 2206352) WPEC Registered Certifier (Hydraulic (stormwater), Road & Drainage and Stormwater) (Reg. No. BDC0827) Registered Design Practitioner (Drainage & Civil Engineering) (Reg. No. DEP0000692) & Professional Engineer (Civil) (Reg. No. DEP0000630) NSW Fair Trading			Project No. 391112022DA	Drawing & Sheet No. / Issue 39111-01/6 / A
A	Development Application	23 May 2023			At 84 Brook Street Muswellbrook NSW 2333		
Issue	Description	Date			Client		