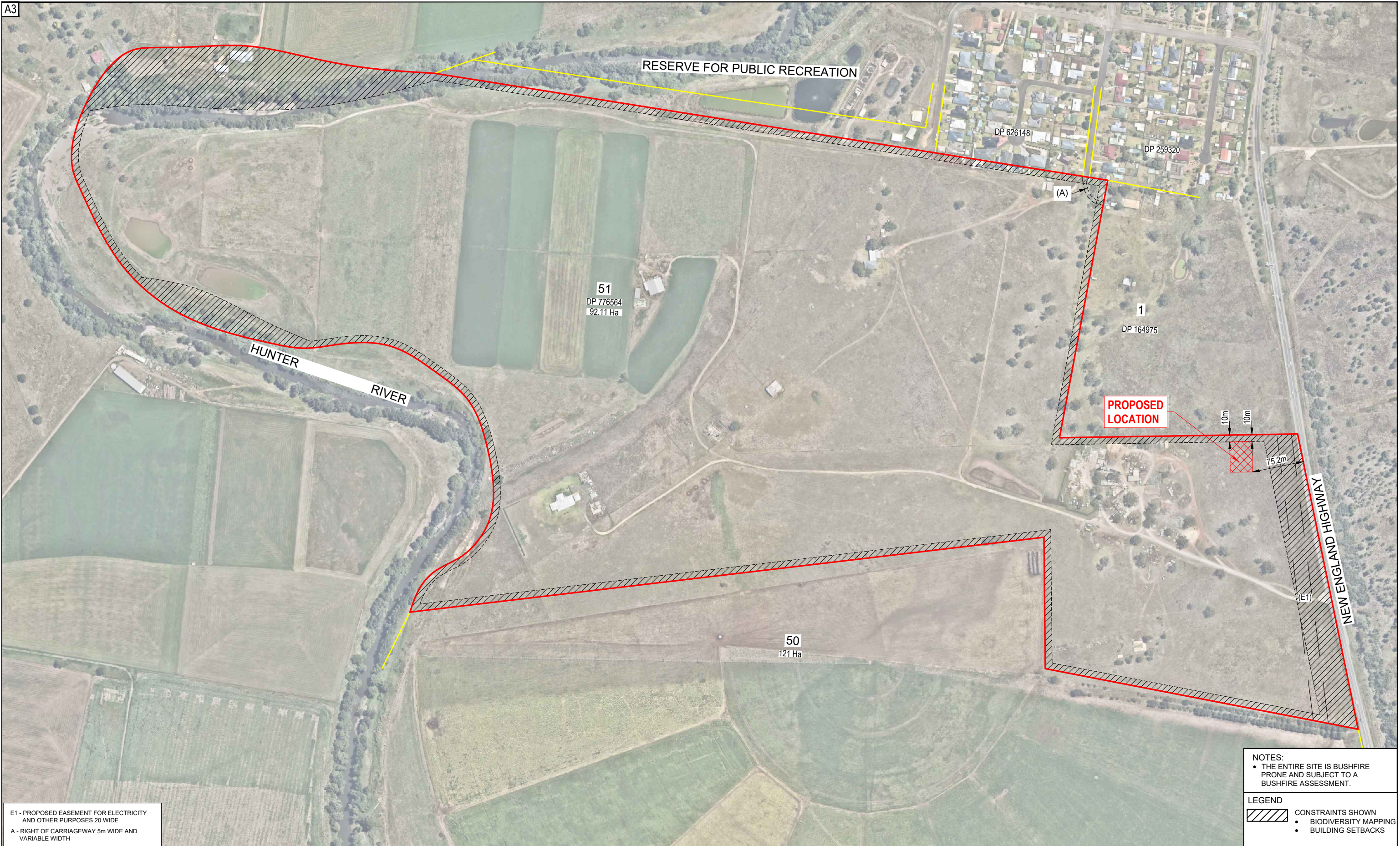


A3



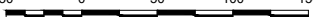
NOTES:

- THE ENTIRE SITE IS BUSHFIRE PRONE AND SUBJECT TO A BUSHFIRE ASSESSMENT.

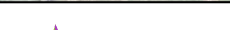


LEGEND

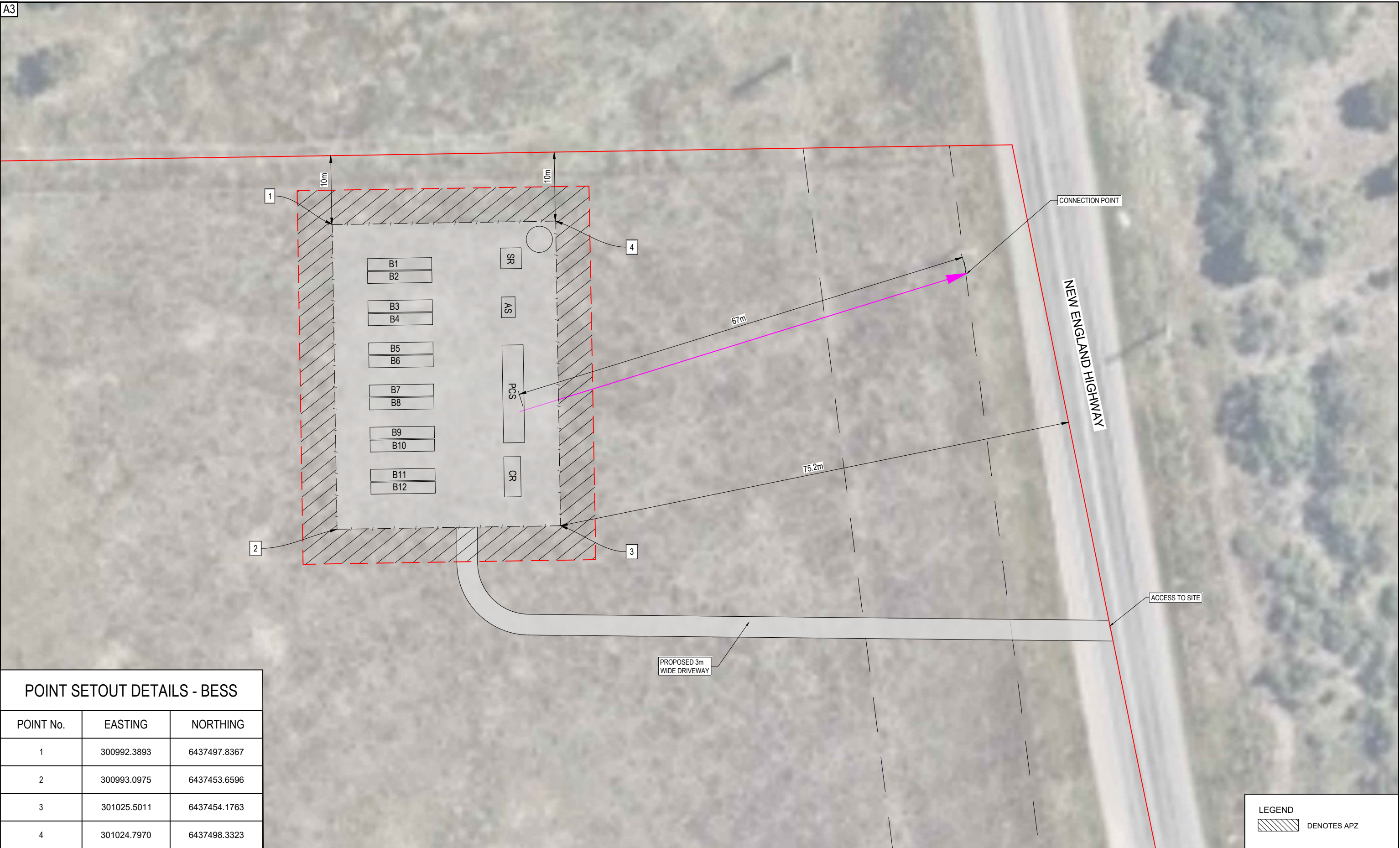
 CONSTRAINTS SHOWN

- BIODIVERSITY MAPPING
- BUILDING SETBACKS

IDB Job No 23012	REVISION A
DWG No 23012(BESS) - 1	
PRELIMINARY	
 <p>50 0 50 100 150</p> <p>1:5000 @ A3</p>	

[illegible]

 <p>hdb TownPlanning & Design</p> <p>1st Floor, 44 Church Street, PO Box 40, MAITLAND NSW 2320</p> <p>P: (02) 4933 6682 F: (02) 4933 6683 E: admin@hdb.com.au W: www.hdb.com.au ABN 35 078 017 508</p>	<p>© COPYRIGHT 2023 - HUNTER DEVELOPMENT BROKERAGE PTY LTD</p> <p>All rights reserved. Hunter Development Brokerage Pty Ltd advises that this document and all information contained therein is protected by copyright under the Australian Copyright Act 1968. Reproduction of this document in part or whole and/or use without the written permission from Hunter Development Brokerage Pty Ltd constitutes a breach of copyright. The document may only be used for the purposes for which it was commissioned and in accordance with the Terms of Engagement for the commission. Any reference to the document must include the document in its entirety and also include reference to Hunter Development Brokerage Pty Ltd.</p>		<p>SURVEY BY:</p>	<p>CLIENT</p>		<p>PROJECT</p>	<p>HDB Job No</p>	<p>REVISION</p>
			<p>CLEAN ENERGY TRANSFER FUND PTY LTD</p>	<p>PROPOSED BATTERY ENERGY STORAGE SYSTEM LOT 51 DP 776564</p>		<p>23012</p>	<p>A</p>	
	<p>DATUM :</p>			<p>981 NEW ENGLAND HIGHWAY ABERDEEN 2336</p>		<p>DWG No</p>	<p>23012(BESS) - 1</p>	
	<p>REDUCED LEVEL :</p>			<p>DRAWING TITLE</p>		<p>PRELIMINARY</p>		
	<p>ORIGIN OF LEVELS :</p>			<p>SITE PLAN OVERALL</p>		 <p>50 0 50 100 150 1:5000 @ A3</p>		
<p>CONTOUR INTERVAL:</p>	<p>DESIGNED: R.F.</p>	<p>DRAWN: S.B.</p>	<p>PLAN:</p>	<p>LONGITUDINAL SECTION :</p>	<p>CROSS SECTION :</p>			
	<p>CHECKED: R.F.</p>	<p>APPROVED: R.F.</p>	<p>1:5000 @ A3</p>	<p>HORIZ. N/A VERT. N/A</p>	<p>HORIZ. N/A VERT. N/A</p>			
<p>SHEET 1 OF 3 SHEETS</p>								



POINT SETOUT DETAILS - BESS		
POINT No.	EASTING	NORTHING
1	300992.3893	6437497.8367
2	300993.0975	6437453.6596
3	301025.5011	6437454.1763
4	301024.7970	6437498.3323

LEGEND

DENOTES APZ

HDB Job No	23012	REVISION	A
DWG No	23012(BESS) - 2		
PRELIMINARY			
<div><div>5015</div><div>1:500 @ A3</div></div>			

A	05/05/23	PRELIMINARY ISSUE	SB	R.F.
REV	DATE	DESCRIPTION	INITIAL	APPR.

hdb

TownPlanning & Design

1st Floor, 44 Church Street, PO Box 40, MAITLAND NSW 2320
P: (02) 4933 6682 F: (02) 4933 6683
E: admin@hdb.com.au W: www.hdb.com.au
ABN 35 078 017 508

© COPYRIGHT 2023 - HUNTER DEVELOPMENT BROKERAGE PTY LTD

All rights reserved. Hunter Development Brokerage Pty Ltd advises that this document and all information contained therein is protected by copyright under the Australian Copyright Act 1968. Reproduction of this document in part or whole and/or use without the written permission from Hunter Development Brokerage Pty Ltd constitutes a breach of copyright. The document may only be used for the purposes for which it was commissioned and in accordance with the Terms of Engagement for the commission. Any reference to the document must include the document in its entirety and also include reference to Hunter Development Brokerage Pty Ltd.

SURVEY BY:		CLIENT	
DATUM :		CLEAN ENERGY TRANSFER FUND PTY LTD	
REDUCED LEVEL :			
ORIGIN OF LEVELS :			
CONTOUR INTERVAL:			
DESIGNED: R.F.	DRAWN: S.B.	PLAN:	LONGITUDINAL SECTION :
CHECKED: R.F.	APPROVED: R.F.	1:500 @ A3	HORIZ. N/A VERT. N/A

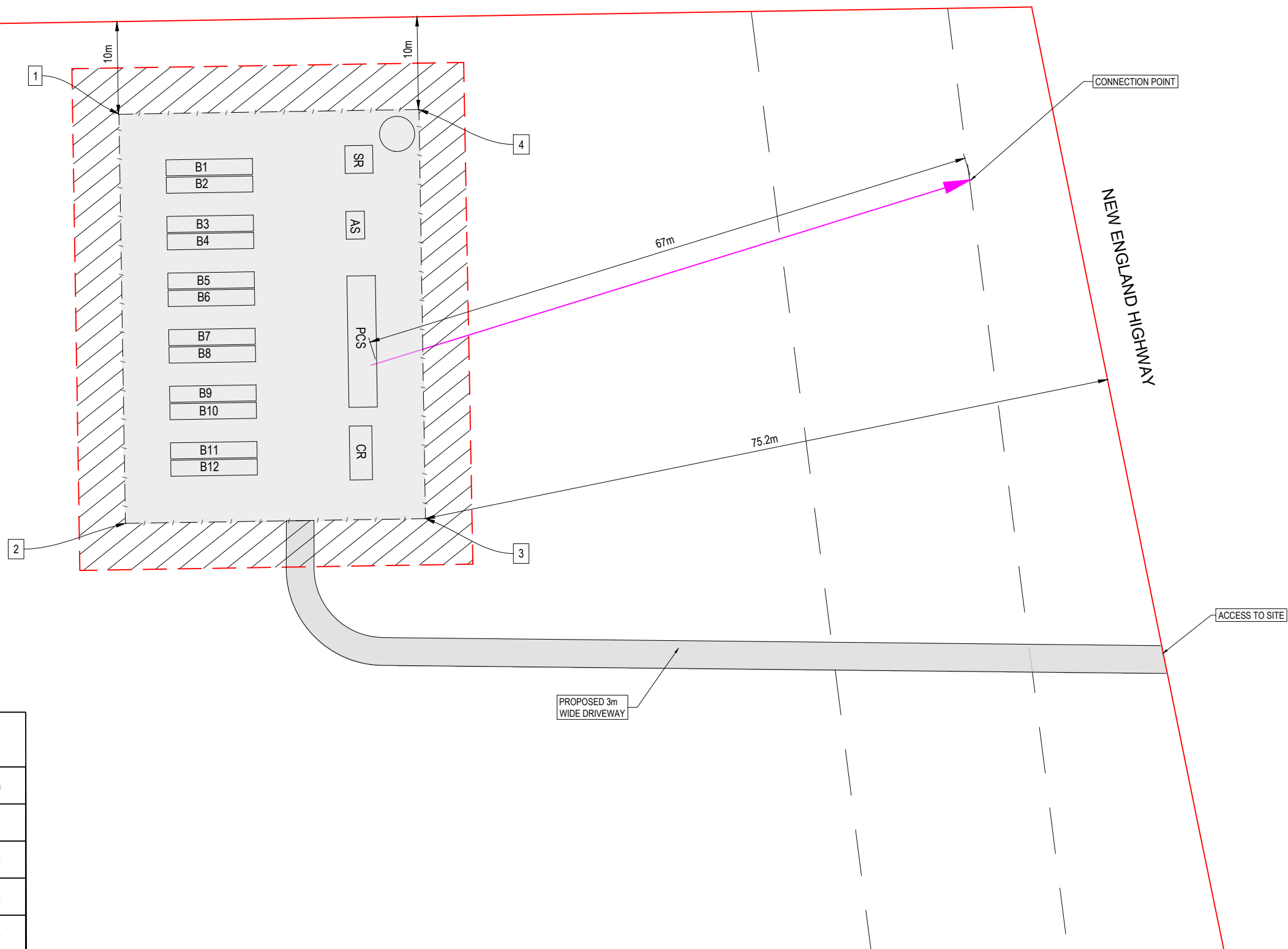
N

PROJECT
PROPOSED BATTERY ENERGY STORAGE SYSTEM
LOT 51 DP 776564
981 NEW ENGLAND HIGHWAY ABERDEEN 2336

CROSS SECTION :	HORIZ. N/A VERT. N/A
-----------------	-------------------------

DRAWING TITLE
DETAILED SITE PLAN

SHEET 2 OF 3 SHEETS



POINT SETOUT DETAILS - BESS

POINT No.	EASTING	NORTHING
1	300992.3893	6437497.8367
2	300993.0975	6437453.6596
3	301025.5011	6437454.1763
4	301024.7970	6437498.3323

A	05/05/23	PRELIMINARY ISSUE	S.B.	R.F.
REV	DATE	DESCRIPTION	INITIAL	APPR



DIAL 1100 BEFORE YOU DIG



hdb

TownPlanning & Design
1st Floor, 44 Church Street, PO Box 40, MAITLAND NSW 2320
P: (02) 4933 6682 F: (02) 4933 6683
E: admin@hdb.com.au W: www.hdb.com.au
ABN 35 078 017 508

© COPYRIGHT 2023 - HUNTER DEVELOPMENT
BROKERAGE PTY LTD

All rights reserved. Hunter Development Brokerage Pty Ltd advises that this document and all information contained therein is protected by copyright under the Australian Copyright Act 1968. Reproduction of this document in part or whole and/or use without the written permission from Hunter Development Brokerage Pty Ltd constitutes a breach of copyright. The document may only be used for the purposes for which it was commissioned and in accordance with the Terms of Engagement for the commission. Any reference to the document must include the document in its entirety and also include reference to Hunter Development Brokerage Pty Ltd.

SURVEY BY:	
DATUM:	
REDUCED LEVEL:	
ORIGIN OF LEVELS:	
CONTOUR INTERVAL:	
DESIGNED: R.F.	DRAWN: S.B.
CHECKED: R.F.	APPROVED: R.F.

CLIENT
CLEAN ENERGY TRANSFER
FUND PTY LTD

PLAN:	1:500 @ A3
-------	------------

LONGITUDINAL SECTION :	
HORIZ.	N/A
VERT.	N/A



CROSS SECTION :	
HORIZ.	N/A
VERT.	N/A

PROJECT	PROPOSED BATTERY ENERGY STORAGE SYSTEM LOT 51 DP 776564 981 NEW ENGLAND HIGHWAY ABERDEEN 2336
DRAWING TITLE	DETAILED SITE PLAN

SHEET 3 OF 3 SHEETS

LEGEND

 DENOTES APZ

HDB Job No	23012
------------	-------

REVISION	A
----------	---

DWG No	23012(BESS) - 3
--------	-----------------

PRELIMINARY

