



MUSWELLBROOK TRACK MAINTENANCE

Reference Number: 287KM

Advanced notification - November 2023

Starting 6:00am Tuesday, 21 November

Maintenance works

Australian Rail Track Corporation (ARTC) will be carrying out Track Reconditioning work in your area to maintain a safe and reliable rail network.

This work is scheduled from **6:00am Tuesday 21st November to 7:00am Friday 24th November**. We will be working continuously between these times, **including nights**.

Preparation works and material deliveries have begun on site and site clean-up will continue for up to four weeks after the work is completed. **Site set-up and pack-up is from 7:00am to 6:00pm, Monday - Friday.**

What is track reconditioning?

Track reconditioning involves excavating the ground beneath the rails and replacing it with new soil and rock, called ballast. This ensures the track can continue to support heavy loads.

How could this work affect you?

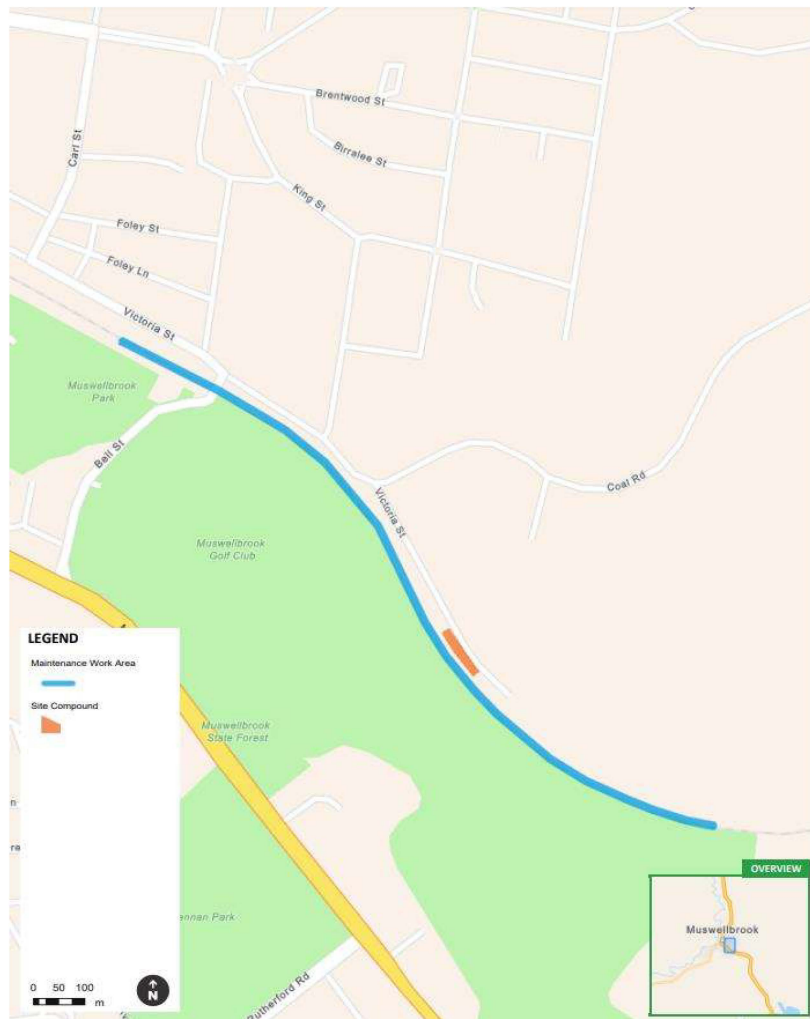
You may be aware of increased noise, light or dust while we are working. Every project is assessed to minimise disruption and we are committed to reducing the impacts of our work on our neighbours wherever possible. Some of the ways we do this include:

- Positioning light towers to shine away from residences
- Reducing dust by watering down work areas
- Minimising noise by turning off machinery when not in use and limiting the number of machines operating at any one time
- Traffic control will safely guide road users
- On-site speed limits

About us

ARTC builds, maintains and operates rail lines across Australia to move passengers and freight safely, reliably and efficiently. We are a vital link in the Hunter Valley's transport supply chain, supporting industries to move goods and people across our region.

The image below shows the location of the maintenance work:



Stay up to date with our projects

The information provided is correct at the time of publishing but is subject to change due to unplanned events such as operational changes or heavy rain.

For the latest information on our work please scan the QR code with your smartphone camera or QR code reader and scroll down to Track Work.

Bus services will be provided for any impacted passenger services, and details and schedules can be found at www.transportnsw.info

Information on road closures and alternative routes can be found at www.livetraffic.com.

WANT TO KNOW MORE?

ARTC is committed to working with landowners, communities, state and local government agencies as a vital part of our planning and consultation work, and we value your input. If you have any questions or comments, please let us know.

1300 550 402
enviroline@artc.com.au
artc.com.au

