




A - EASEMENT TO DRAIN WATER 40 WIDE

NOTES:
• THE ENTIRE SITE IS BUSHFIRE PRONE AND SUBJECT TO A BUSHFIRE ASSESSMENT.

LEGEND
• CONSTRAINT SHOWN
• BUILDING SETBACKS
--- DENOTES APPROXIMATE 1% AEP FLOOD LEVEL


REV	DATE	DESCRIPTION	INITIAL	APPR
D	27/10/23	PMF LEVELS	S.J.	R.F.
C	24/10/23	FACILITY LOCATION	R.F.	R.F.
B	12/10/23	REVISED ISSUE	S.J.	R.F.
A	08/05/23	PRELIMINARY ISSUE	S.S.	R.F.



hdb
TownPlanning & Design
1st Floor, 44 Church Street, PO Box 40, MAITLAND NSW 2320
P: (02) 4933 6682 F: (02) 4933 6683
E: admin@hdb.com.au W: www.hdb.com.au
ABN 35 078 017 508

© COPYRIGHT 2022 - HUNTER DEVELOPMENT BROKERAGE PTY LTD
All rights reserved. Hunter Development Brokerage Pty Ltd advises that this document and all information contained therein is protected by copyright under the Australian Copyright Act 1968. Reproduction of this document in part or whole and/or use without the written permission from Hunter Development Brokerage Pty Ltd constitutes a breach of copyright. The document may only be used for the purposes for which it was commissioned and in accordance with the Terms of Engagement for the commission. Any reference to the document must include the document in its entirety and also include reference to Hunter Development Brokerage Pty Ltd.

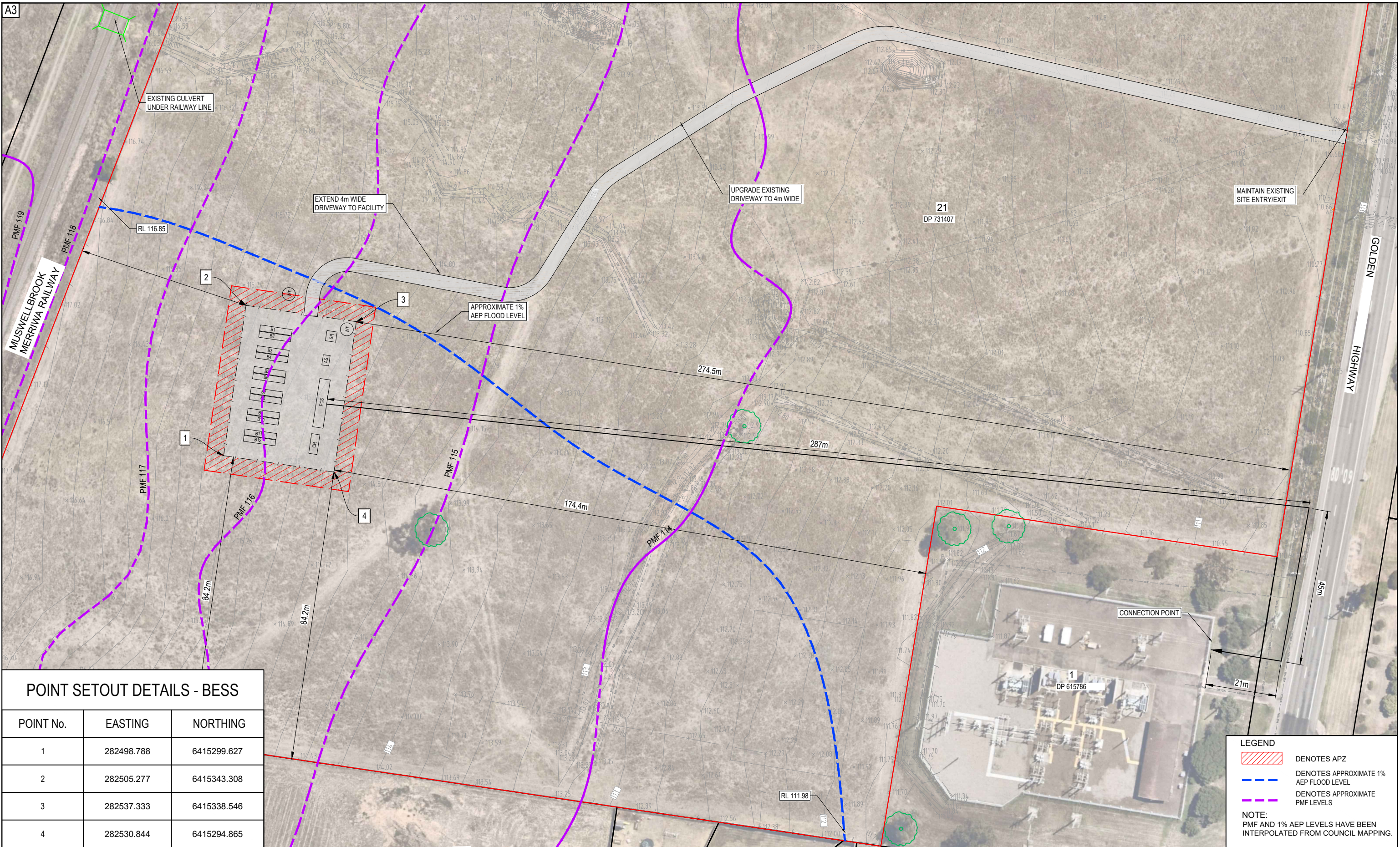
SURVEY BY:		CLIENT	
DATUM:		CLEAN ENERGY TRANSFER FUND PTY LTD	
REDUCED LEVEL:			
ORIGIN OF LEVELS:			
CONTOUR INTERVAL:			
DESIGNED: R.F.	DRAWN: S.S.	PLAN:	LONGITUDINAL SECTION:
CHECKED: R.F.	APPROVED: R.F.	1:3000 @ A3	HORIZ. N/A VERT. N/A
		CROSS SECTION:	HORIZ. N/A VERT. N/A




PROJECT
PROPOSED BATTERY ENERGY STORAGE SYSTEM
LOT 23 DP 1731407
105 MERRIWA ROAD, DENMAN 2328
DRAWING TITLE
PRELIMINARY CONSTRAINTS MAPPING
SHEET 1 OF 3 SHEETS

HDB Job No
23046
DWG No
23046(BESS) - 1
PRELIMINARY


REVISION
B
30 0 30 60 90
1:3000 @ A3



D	27/10/23	PMF LEVELS	S.J.	R.F.	
C	24/10/23	FACILITY LOCATION	R.F.	R.F.	
B	12/10/23	REVISED ISSUE	S.J.	R.F.	
A	08/05/23	PRELIMINARY ISSUE	S.S.	R.F.	
REV	DATE	DESCRIPTION	INITIAL	APPR	



DIAL 1100
BEFORE YOU DRIVE



hdb
TownPlanning & Design
1st Floor, 44 Church Street, PO Box 40, MAITLAND NSW 2320
P: (02) 4933 6682 F: (02) 4933 6683
E: admin@hdb.com.au W: www.hdb.com.au
ABN 35 078 017 508

© COPYRIGHT 2022 - HUNTER DEVELOPMENT BROKERAGE PTY LTD
All rights reserved. Hunter Development Brokerage Pty Ltd advises that this document and all information contained therein is protected by copyright under the Australian Copyright Act 1968. Reproduction of this document in part or whole and/or use without the written permission from Hunter Development Brokerage Pty Ltd constitutes a breach of copyright. The document may only be used for the purposes for which it was commissioned and in accordance with the Terms of Engagement for the commission. Any reference to the document must include the document in its entirety and also include reference to Hunter Development Brokerage Pty Ltd.

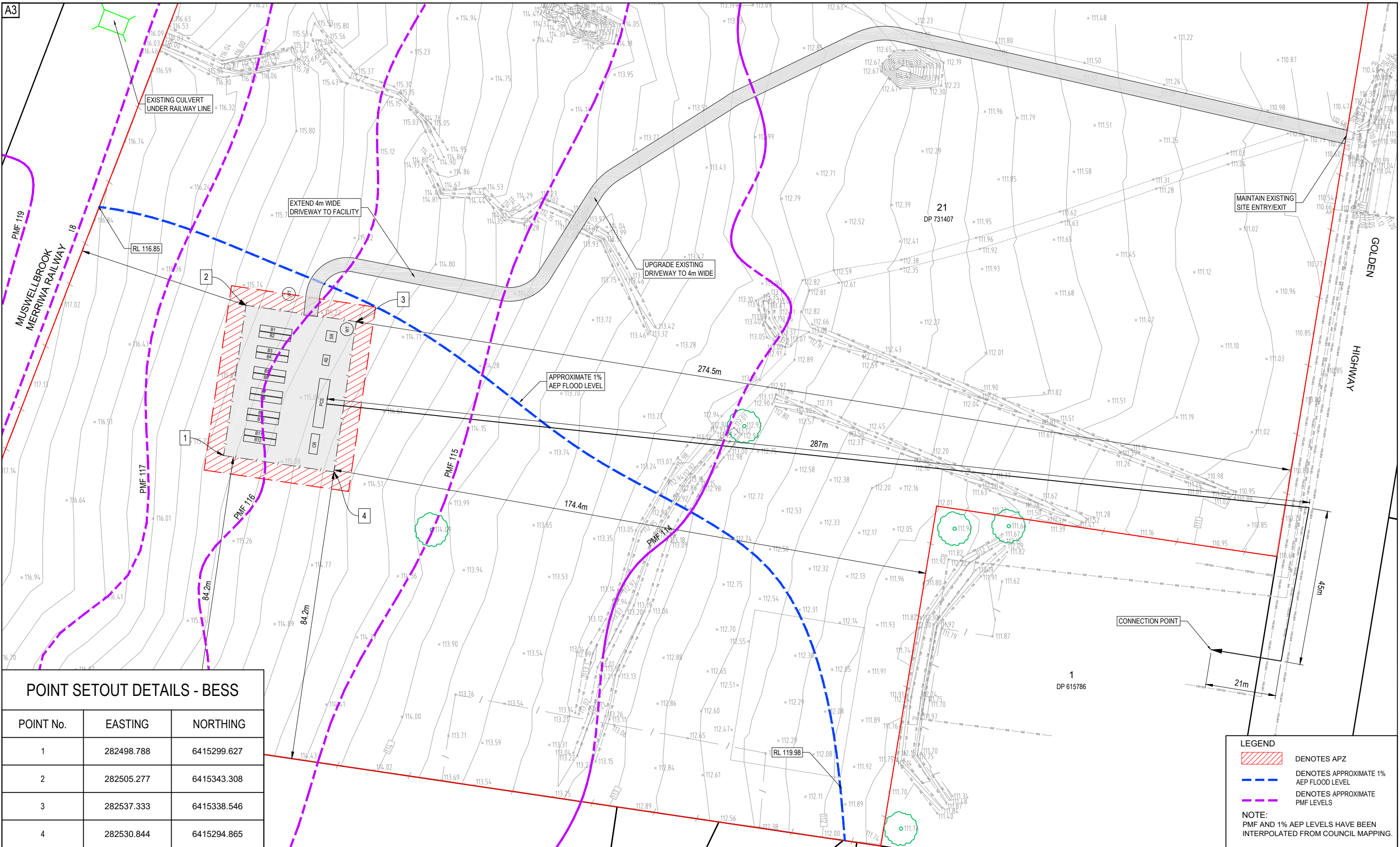
SURVEY BY:	
DATUM:	
REDUCED LEVEL:	
ORIGIN OF LEVELS:	
CONTOUR INTERVAL:	
DESIGNED: R.F.	DRAWN: S.S.
CHECKED: R.F.	APPROVED: R.F.

CLIENT	
CLEAN ENERGY TRANSFER FUND PTY LTD	
DESIGNED: R.F.	DRAWN: S.S.
CHECKED: R.F.	APPROVED: R.F.



PROJECT	
PROPOSED BATTERY ENERGY STORAGE SYSTEM LOT 23 DP 1731407 105 MERRIWA ROAD, DENMAN 2328	
DRAWING TITLE	
DETAILED SITE PLAN	
SHEET 2 OF 3 SHEETS	

HDB Job No	23046	REVISION	B
DWG No	23046(BESS) - 2	PRELIMINARY	
10 0 10 20 30		1:1000 @ A3	



POINT SETOUT DETAILS - BESS		
POINT No.	EASTING	NORTHING
1	282498.788	6415299.627
2	282505.277	6415343.308
3	282537.333	6415338.546
4	282530.844	6415294.865

LEGEND

DENOTES APZ

DENOTES APPROXIMATE 1% AEP FLOOD LEVEL

DENOTES APPROXIMATE PMF LEVELS

NOTE:
PMF AND 1% AEP LEVELS HAVE BEEN INTERPOLATED FROM COUNCIL MAPPING.

REV	DATE	DESCRIPTION	INITIAL	APPR
D	27/10/23	PMF LEVELS	S.J.	R.F.
C	24/10/23	FACILITY LOCATION	R.F.	R.F.
B	12/10/23	REVISED ISSUE	S.J.	R.F.
A	08/05/23	PRELIMINARY ISSUE	S.S.	R.F.

hdb

TownPlanning & Design

1st Floor, 44 Church Street, PO Box 40, MAITLAND NSW 2320
P: (02) 4933 6682 F: (02) 4933 6683
E: admin@hdb.com.au W: www.hdb.com.au
ABN 35 078 017 508

© COPYRIGHT 2022 - HUNTER DEVELOPMENT BROKERAGE PTY LTD
All rights reserved. Hunter Development Brokerage Pty Ltd advises that this document and all information contained therein is protected by copyright under the Australian Copyright Act 1968. Reproduction of this document in part or whole and/or use without the written permission from Hunter Development Brokerage Pty Ltd constitutes a breach of copyright. The document may only be used for the purposes for which it was commissioned and in accordance with the Terms of Engagement for the commission. Any reference to the document must include the document in its entirety and also include reference to Hunter Development Brokerage Pty Ltd.

SURVEY BY:	
DATUM:	
REDUCED LEVEL:	
ORIGIN OF LEVELS:	
CONTOUR INTERVAL:	
DESIGNED: R.F.	DRAWN: S.S.
CHECKED: R.F.	APPROVED: R.F.

CLEAN ENERGY TRANSFER
FUND PTY LTD

PLAN:
1:1000 @ A3

LONGITUDINAL SECTION:
HORIZ. N/A
VERT. N/A

CROSS SECTION:
HORIZ. N/A
VERT. N/A



PROJECT
PROPOSED BATTERY ENERGY STORAGE SYSTEM
LOT 23 DP 1731407
105 MERRIWA ROAD, DENMAN 2328

DRAWING TITLE
DETAILED SITE PLAN

SHEET 3 OF 3 SHEETS

HDB Job No
23046

REVISION
B

DWG No
23046(BESS) - 3

PRELIMINARY

10 0 10 20 30
1:1000 @ A3