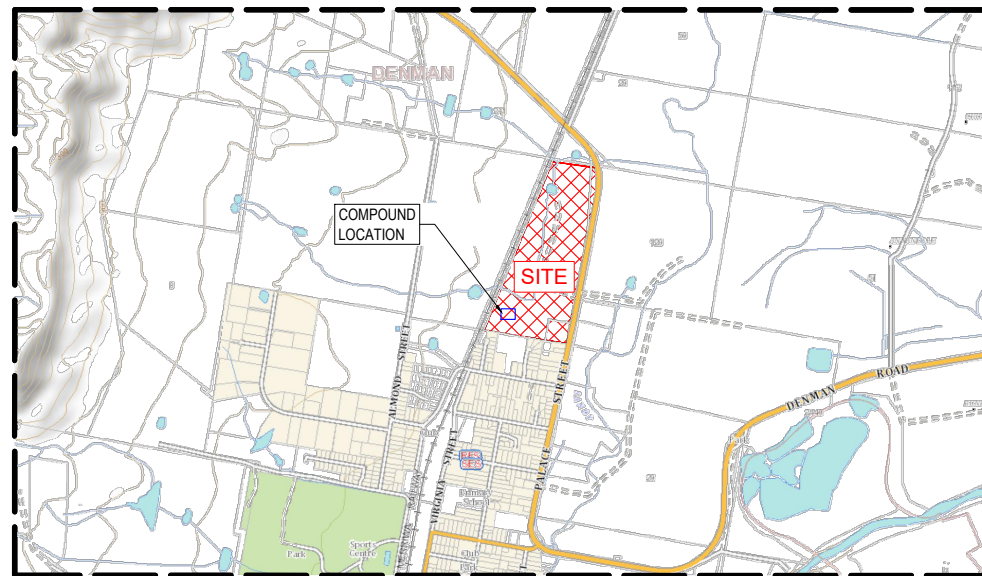


PROPOSED BATTERY ENERGY STORAGE SYSTEM  
LOT 21 DP 731407 105 MERRIWA ROAD, DENMAN

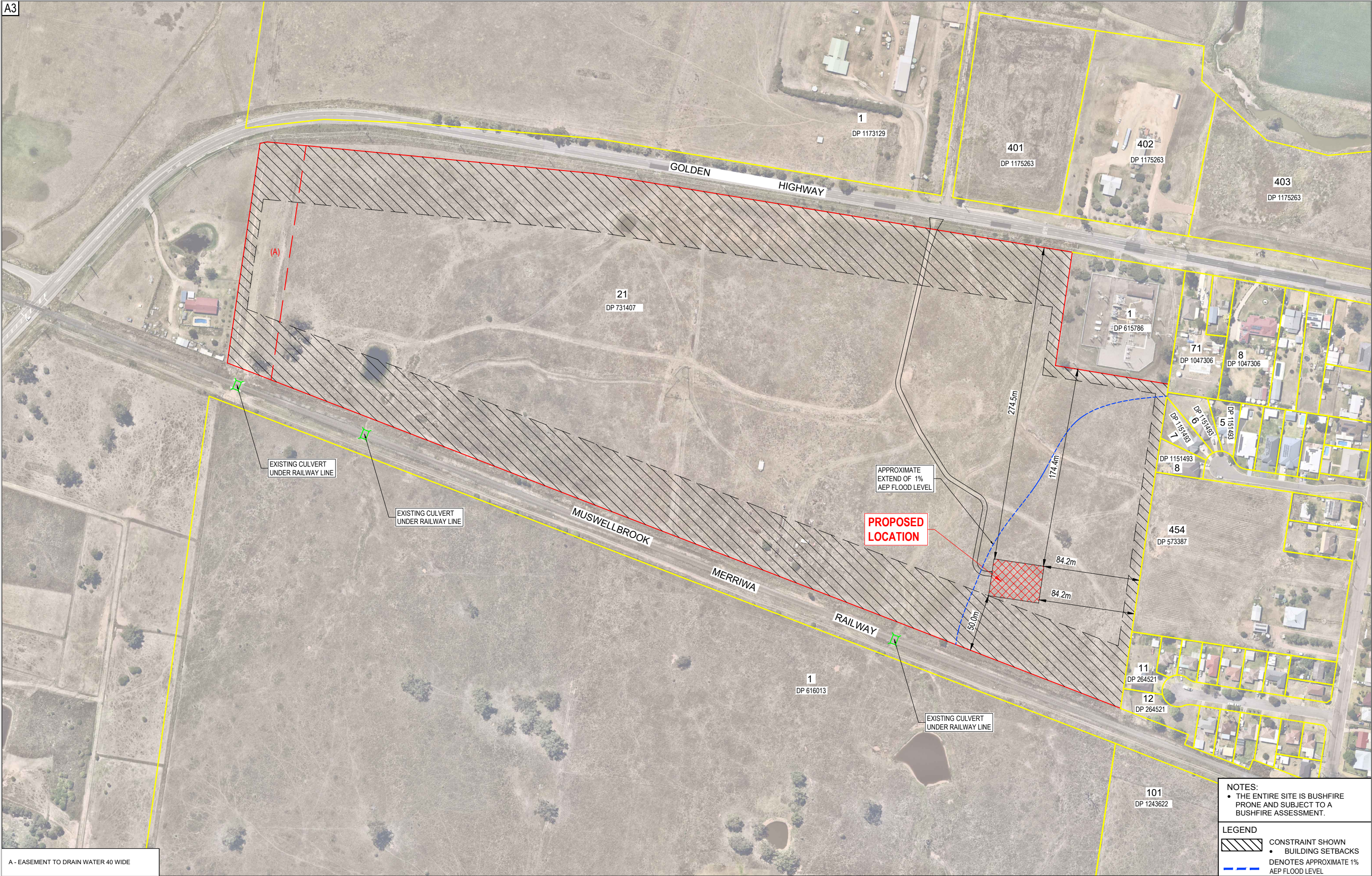


LOCALITY PLAN

DRAWING SCHEDULE		
NUMBER	TITLE	SCALE
1	COVER SHEET	N.T.S
2	SITE PLAN	1:3000
3	COMPOUND PAD WITH EXISTING FEATURES	1:100
4	COMPOUND PAD WITH PROPOSED STRUCTURES	1:500
5	ACCESS	1:500
6	LONGITUDINAL SECTION 1 OF 3	1:200
7	LONGITUDINAL SECTION 2 OF 3	1:200
8	LONGITUDINAL SECTION 3 OF 3	1:200
9	CROSS SECTION 1 OF 2	1:200
10	CROSS SECTION 2 OF 2	1:200
11	DETAILS	AS NOTED

[illegible]





A - EASEMENT TO DRAIN WATER 40 WIDE

NOTES:  
• THE ENTIRE SITE IS BUSHFIRE PRONE AND SUBJECT TO A BUSHFIRE ASSESSMENT.

LEGEND  
[Hatched Box] CONSTRAINT SHOWN  
• BUILDING SETBACKS  
[Blue Dashed Line] DENOTES APPROXIMATE 1% AEP FLOOD LEVEL

REV	DATE	DESCRIPTION	INITIAL	APPR
D	04/12/23	ACCESS	PC	RF
C	16/11/23	CHANGE WALL TYPE	PC	RF
B	08/11/23	WALL DETAILS	PC	RF
A	30/10/23	PRELIMINARY ISSUE	PC	RF



**hdb**  
TownPlanning & Design  
1st Floor, 44 Church Street, PO Box 40, MAITLAND NSW 2320  
P: [02] 4933 6682 F: [02] 4933 6683  
E: admin@hdb.com.au W: www.hdb.com.au  
ABN 35 078 017 508

© COPYRIGHT 2022 - HUNTER DEVELOPMENT BROKERAGE PTY LTD  
All rights reserved. Hunter Development Brokerage Pty Ltd advises that this document and all information contained therein is protected by copyright under the Australian Copyright Act 1968. Reproduction of this document in part or whole and/or use without the written permission from Hunter Development Brokerage Pty Ltd constitutes a breach of copyright. The document may only be used for the purposes for which it was commissioned and in accordance with the Terms of Engagement for the commission. Any reference to the document must include the document in its entirety and also include reference to Hunter Development Brokerage Pty Ltd.

SURVEY BY:	
DATUM:	
REDUCED LEVEL:	
ORIGIN OF LEVELS:	
CONTOUR INTERVAL:	
DESIGNED: R.F.	DRAWN: S.S.
CHECKED: R.F.	APPROVED: R.F.

CLIENT CLEAN ENERGY TRANSFER FUND PTY LTD	
PLAN:	1:3000(A3)
LONGITUDINAL SECTION:	HORIZ. 1:200 VERT. 1:200
CROSS SECTION:	HORIZ. 1:200 VERT. 1:200

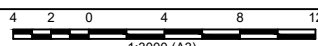


PROJECT PROPOSED BATTERY ENERGY STORAGE SYSTEM LOT 21 DP 731407 105 MERRIWA ROAD, DENMAN
DRAWING TITLE SITE PLAN
SHEET 2 OF 11 SHEETS

HDB Job No  
**23046**

REVISION  
**D**

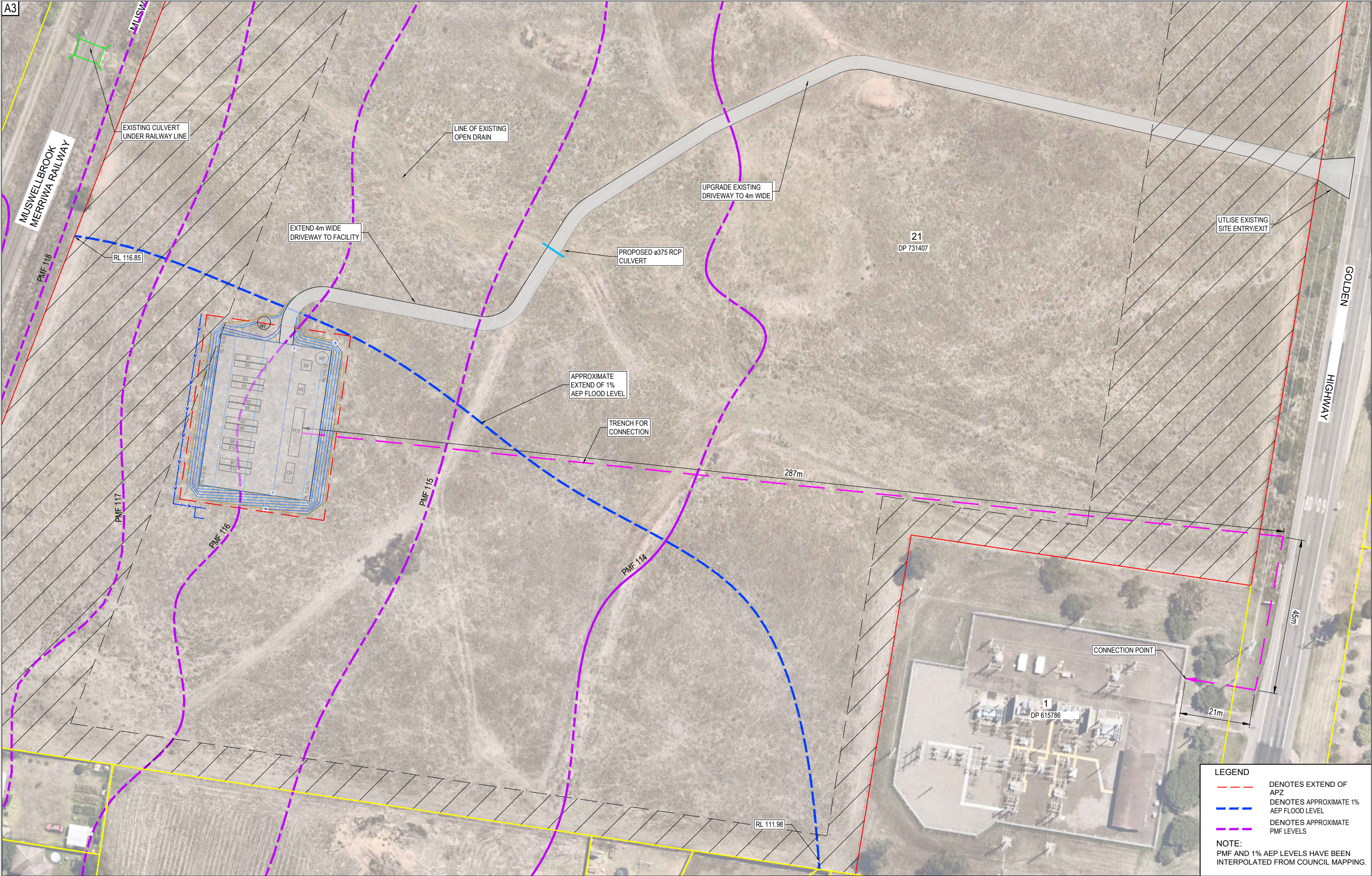
DWG No  
**23046[CD] - 2**



1:3000 (A3)



A3



REV	DATE	DESCRIPTION	INITIAL	APPR.
D	04/12/23	ACCESS	PC	RF
C	16/11/23	CHANGE WALL TYPE	PC	RF
B	08/11/23	WALL DETAILS	PC	RF
A	30/10/23	PRELIMINARY ISSUE	PC	RF

TownPlanning & Design

1st Floor, 44 Church Street, PO Box 40, MAITLAND NSW 2320

P: [02] 4933 6682 F: [02] 4933 6683

E: admin@hdb.com.au W: www.hdb.com.au

ABN 35 078 017 508

© COPYRIGHT 2022 - HUNTER DEVELOPMENT BROKERAGE PTY LTD

All rights reserved. Hunter Development Brokerage Pty Ltd advises that this document and all information contained therein is protected by copyright under the Australian Copyright Act 1969. Reproduction of this document in part or whole and/or use without the written permission from Hunter Development Brokerage Pty Ltd constitutes a breach of copyright. The document may only be used for the purposes for which it was commissioned and in accordance with the Terms of Engagement for the commission. Any reference to the document must include the document in its entirety and also include reference to Hunter Development Brokerage Pty Ltd.

SURVEY BY:	
DATUM:	
REDUCED LEVEL:	
ORIGIN OF LEVELS:	
CONTOUR INTERVAL:	
DESIGNED: R.F.	DRAWN: S.S.
CHECKED: R.F.	APPROVED: R.F.

CLIENT	
CLEAN ENERGY TRANSFER FUND PTY LTD	
PLAN:	1:1000(A3)
LONGITUDINAL SECTION:	HORIZ. 1:200
VERT. 1:200	CROSS SECTION:
	HORIZ. 1:200
	VERT. 1:200



PROJECT	
PROPOSED BATTERY ENERGY STORAGE SYSTEM	
LOT 21 DP 731407	
105 MERRIWA ROAD, DENMAN	
DRAWING TITLE	
COMPOUND PAD WITH EXISTING FEATURES	
SHEET 3 OF 11 SHEETS	

HDB Job No

23046

REVISION

D

DWG No

23046[CD] - 3

CONCEPT

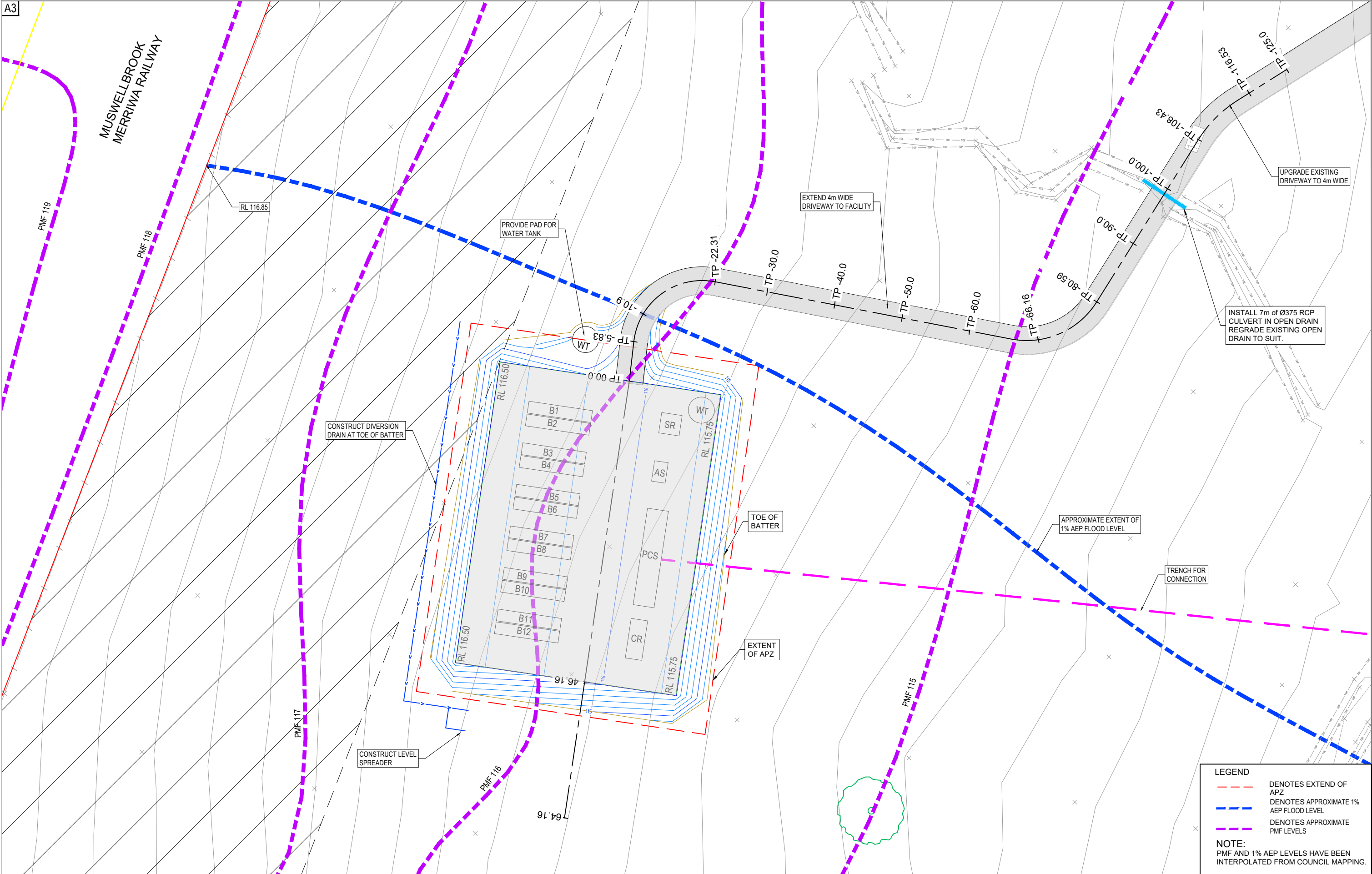
NOT FOR CONSTRUCTION

4 2 0 4 8 12

1:1000 (A3)



A3



**LEGEND**

DENOTES EXTEND OF APZ

DENOTES APPROXIMATE 1% AEP FLOOD LEVEL

DENOTES APPROXIMATE PMF LEVELS

**NOTE:**  
PMF AND 1% AEP LEVELS HAVE BEEN INTERPOLATED FROM COUNCIL MAPPING.

D	04/12/23	ACCESS	PC	RF	
C	16/11/23	CHANGE WALL TYPE	PC	RF	
B	08/11/23	WALL DETAILS	PC	RF	
A	30/10/23	PRELIMINARY ISSUE	PC	RF	
REV	DATE	DESCRIPTION	INITIAL	APPR	



hdb

TownPlanning & Design

1st Floor, 44 Church Street, PO Box 40, MAITLAND NSW 2320

P: (02) 4933 6682 F: (02) 4933 6683

E: admin@hdb.com.au W: www.hdb.com.au

ABN 35 078 017 508

© COPYRIGHT 2022 - HUNTER DEVELOPMENT BROKERAGE PTY LTD  
All rights reserved. Hunter Development Brokerage Pty Ltd advises that this document and all information contained therein is protected by copyright under the Australian Copyright Act 1969. Reproduction of this document in part or whole and/or use without the written permission from Hunter Development Brokerage Pty Ltd constitutes a breach of copyright. The document may only be used for the purposes for which it was commissioned and in accordance with the Terms of Engagement for the commission. Any reference to the document must include the document in its entirety and also include reference to Hunter Development Brokerage Pty Ltd.

SURVEY BY:	
DATUM:	
REDUCED LEVEL:	
ORIGIN OF LEVELS:	
CONTOUR INTERVAL:	
DESIGNED: R.F.	DRAWN: S.S.
CHECKED: R.F.	APPROVED: R.F.

CLIENT	
CLEAN ENERGY TRANSFER FUND PTY LTD	
PLAN:	
1:500(A3)	
LONGITUDINAL SECTION:	
HORIZ. 1:200	
VERT. 1:200	
CROSS SECTION:	
HORIZ. 1:200	
VERT. 1:200	



PROJECT

PROPOSED BATTERY ENERGY STORAGE SYSTEM

LOT 21 DP 731407

105 MERRIWA ROAD, DENMAN

DRAWING TITLE

COMPOUND PAD WITH PRO STRUCTURES

SHEET 4 OF 10 SHEETS

HDB Job No

23046

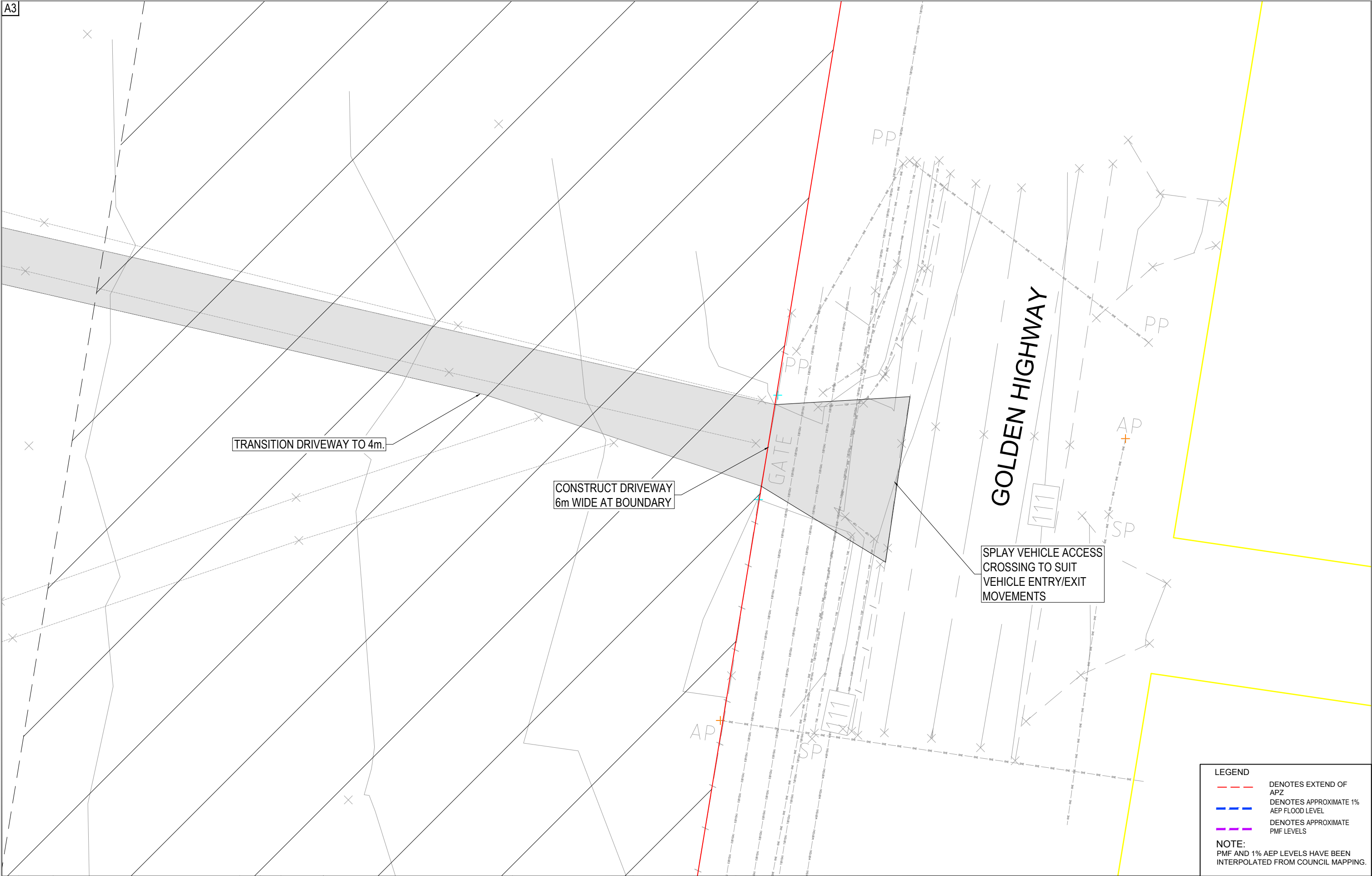
REVISION

D

DWG No

23046[CD] - 4

CONCEPT NOT FOR CONSTRUCTION



**LEGEND**

- DENOTES EXTEND OF APZ
- DENOTES APPROXIMATE 1% AEP FLOOD LEVEL
- DENOTES APPROXIMATE PMF LEVELS

**NOTE:**  
PMF AND 1% AEP LEVELS HAVE BEEN INTERPOLATED FROM COUNCIL MAPPING.

REV	DATE	DESCRIPTION	INITIAL	APPR.
D	04/12/23	ACCESS	PC	RF
C	16/11/23	CHANGE WALL TYPE	PC	RF
B	08/11/23	WALL DETAILS	PC	RF
A	30/10/23	PRELIMINARY ISSUE	PC	RF



**hdb**  
TownPlanning & Design  
1st Floor, 44 Church Street, PO Box 40, MAITLAND NSW 2320  
P: [02] 4933 6682 F: [02] 4933 6683  
E: admin@hdb.com.au W: www.hdb.com.au  
ABN 35 078 017 508

© COPYRIGHT 2022 - HUNTER DEVELOPMENT BROKERAGE PTY LTD  
All rights reserved. Hunter Development Brokerage Pty Ltd advises that this document and all information contained therein is protected by copyright under the Australian Copyright Act 1969. Reproduction of this document in part or whole and/or use without the written permission from Hunter Development Brokerage Pty Ltd constitutes a breach of copyright. The document may only be used for the purposes for which it was commissioned and in accordance with the Terms of Engagement for the commission. Any reference to the document must include the document in its entirety and also include reference to Hunter Development Brokerage Pty Ltd.

SURVEY BY:	
DATUM :	
REDUCED LEVEL :	
ORIGIN OF LEVELS :	
CONTOUR INTERVAL:	
DESIGNED: R.F.	DRAWN: P.C.
CHECKED: R.F.	APPROVED: R.F.

CLIENT  
**CLEAN ENERGY TRANSFER  
FUND PTY LTD**



PLAN:	LONGITUDINAL SECTION :	CROSS SECTION :
1:500(A3)	HORIZ. 1:200	HORIZ. 1:200
	VERT. 1:200	VERT. 1:200

PROJECT  
**PROPOSED BATTERY ENERGY STORAGE SYSTEM**  
**LOT 21 DP 731407**  
**105 MERRIWA ROAD, DENMAN**

DRAWING TITLE  
**COMPOUND PAD WITH PRO STRUCTURES**

SHEET 4 OF 11 SHEETS

HDB Job No  
**23046**

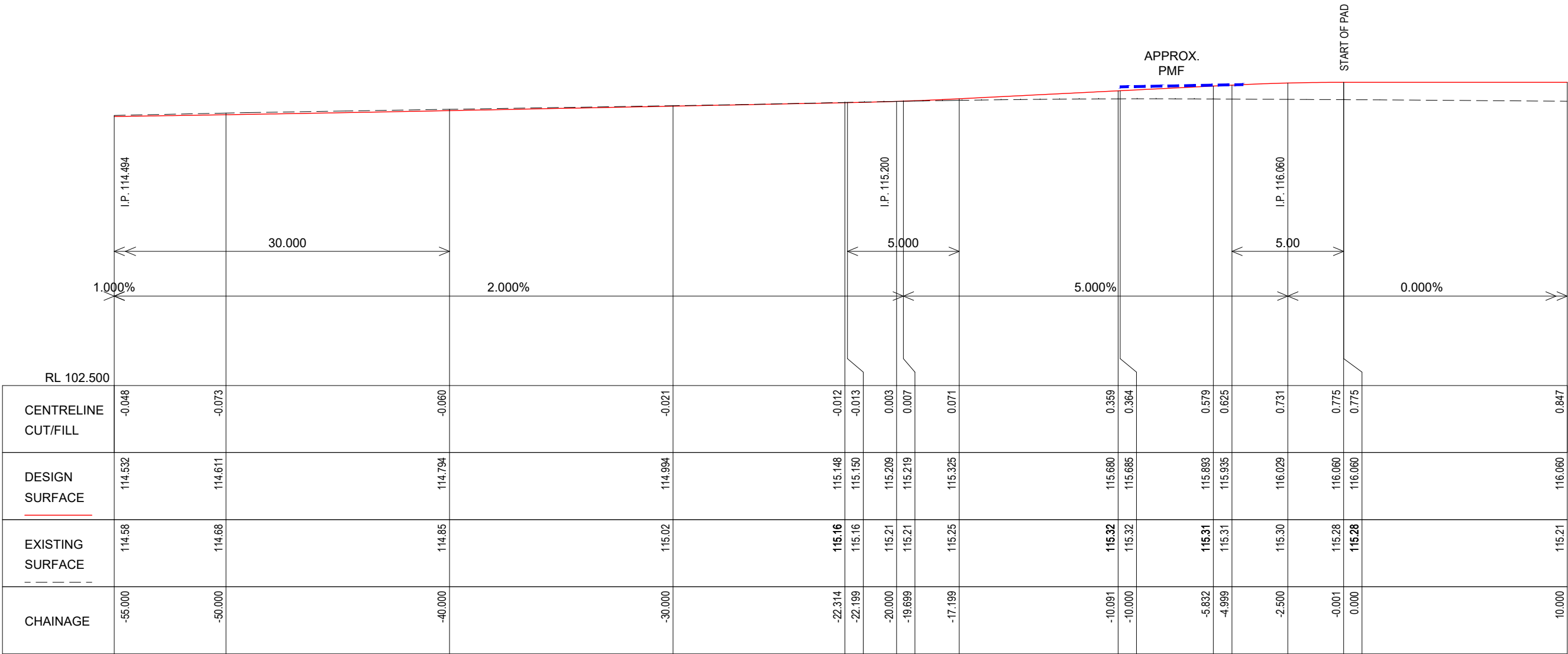
DWG No  
**23046[CD] - 5**

REVISION  
**D**

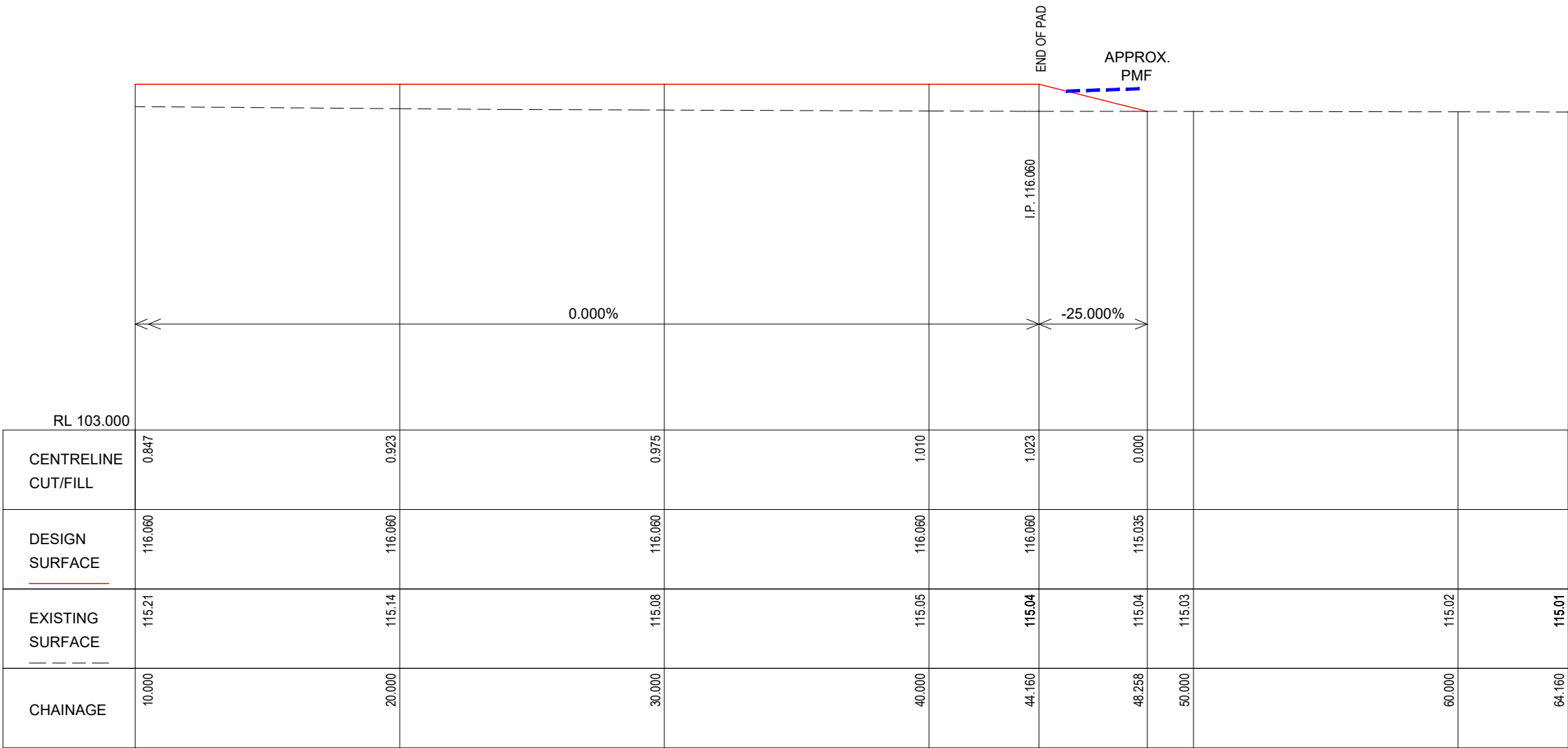
**CONCEPT**  
NOT FOR CONSTRUCTION

5 2.5 0 5 10 15 20 25  
1:250






LONGITUDINAL SECTION  
DRIVEWAY CL Ch -55.000 to Ch 10.000  
SCALES: HORIZONTAL 1:200 VERTICAL 1:200




LONGITUDINAL SECTION  
DRIVEWAY CL Ch 10.000 to Ch 64.160

SCALES: HORIZONTAL 1:200 VERTICAL 1:200

D	04/12/23	ACCESS	PC	RF	
C	16/11/23	CHANGE WALL TYPE	PC	RF	
B	08/11/23	WALL DETAILS	PC	RF	
A	30/10/23	PRELIMINARY ISSUE	PC	RF	
REV	DATE	DESCRIPTION	INITIAL	APPR	





TownPlanning & Design

1st Floor, 44 Church Street, PO Box 40, MAITLAND NSW 2320

P: (02) 4933 6682 F: (02) 4933 6683

E: admin@hdb.com.au W: www.hdb.com.au

ABN 35 078 017 508

© COPYRIGHT 2022 - HUNTER DEVELOPMENT BROKERAGE PTY LTD

All rights reserved. Hunter Development Brokerage Pty Ltd advises that this document and all information contained therein is protected by copyright under the Australian Copyright Act 1968. Reproduction of this document in part or whole and/or use without the written permission from Hunter Development Brokerage Pty Ltd constitutes a breach of copyright. The document may only be used for the purposes for which it was commissioned and in accordance with the Terms of Engagement for the commission. Any reference to the document must include the document in its entirety and also include reference to Hunter Development Brokerage Pty Ltd.

SURVEY BY:

DATUM:

REDUCED LEVEL:

ORIGIN OF LEVELS:

CONTOUR INTERVAL:

DESIGNED: R.F

DRAWN: S.B

CHECKED: R.F

APPROVED: R.F.

CLIENT

CLEAN ENERGY TRANSFER FUND PTY LTD

PLAN:

1:200 @ (A3)

LONGITUDINAL SECTION:

HORIZ. 1:200

VERT. 1:200

CROSS SECTION:

HORIZ. 1:200

VERT. 1:200

PROJECT

PROPOSED BATTERY ENERGY STORAGE SYSTEM

LOT 21 DP 731407

105 MERRIWA ROAD, DENMAN

DRAWING TITLE

LONGITUDINAL SECTION 3 OF 3

SHEET 7 OF 11 SHEETS

HDB Job No

23046

DWG No

23046[CD] - 8

REVISION

D

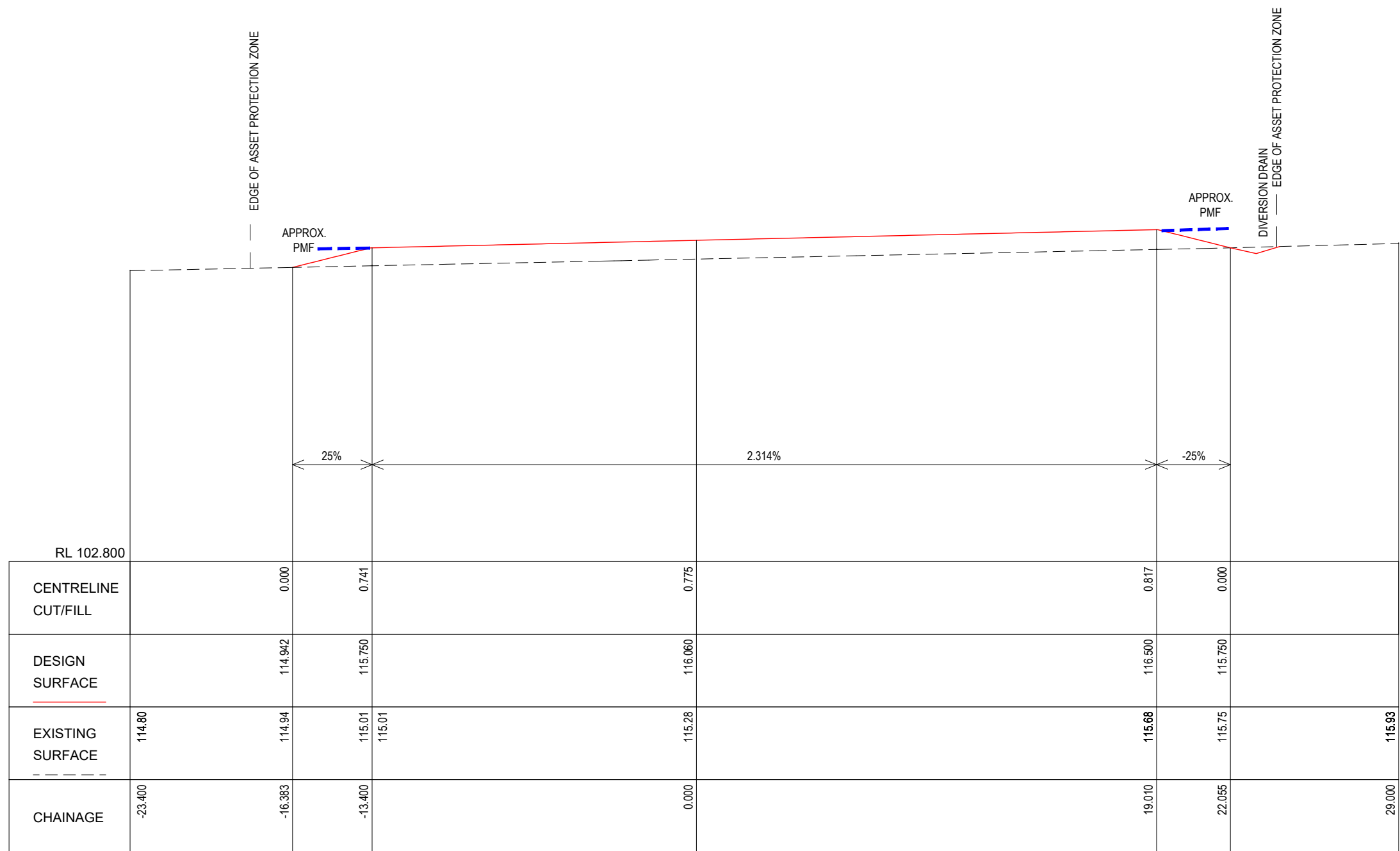
CONCEPT

NOT FOR CONSTRUCTION

4 2 0 4 8 12

1:200 @ (A3)





CROSS SECTION  
CH 0.00

SCALE H 1:200, V 1:200 @ A3

[illegible]

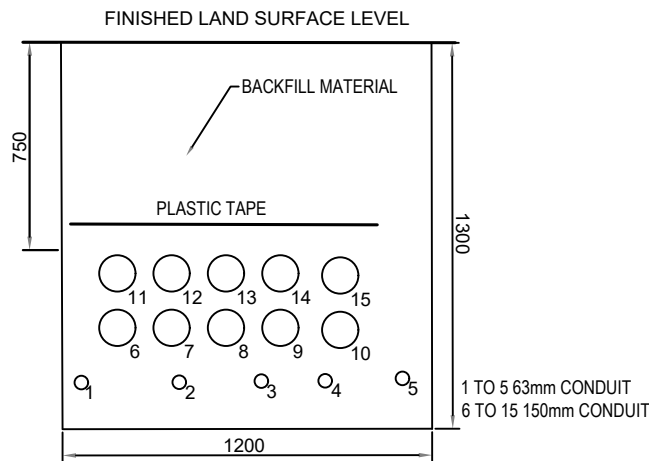




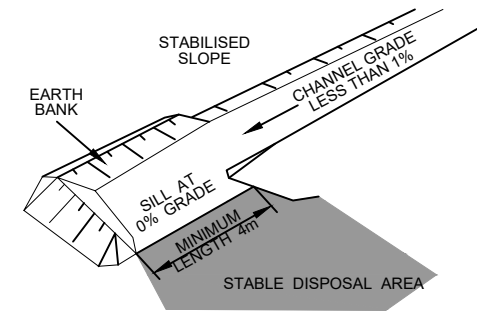




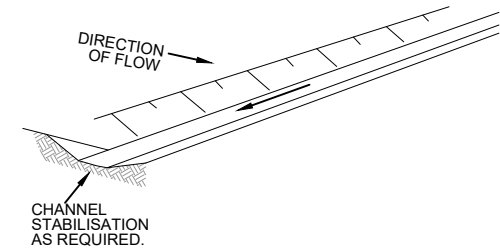
TRIMDEK PROFILE  
N.T.S.



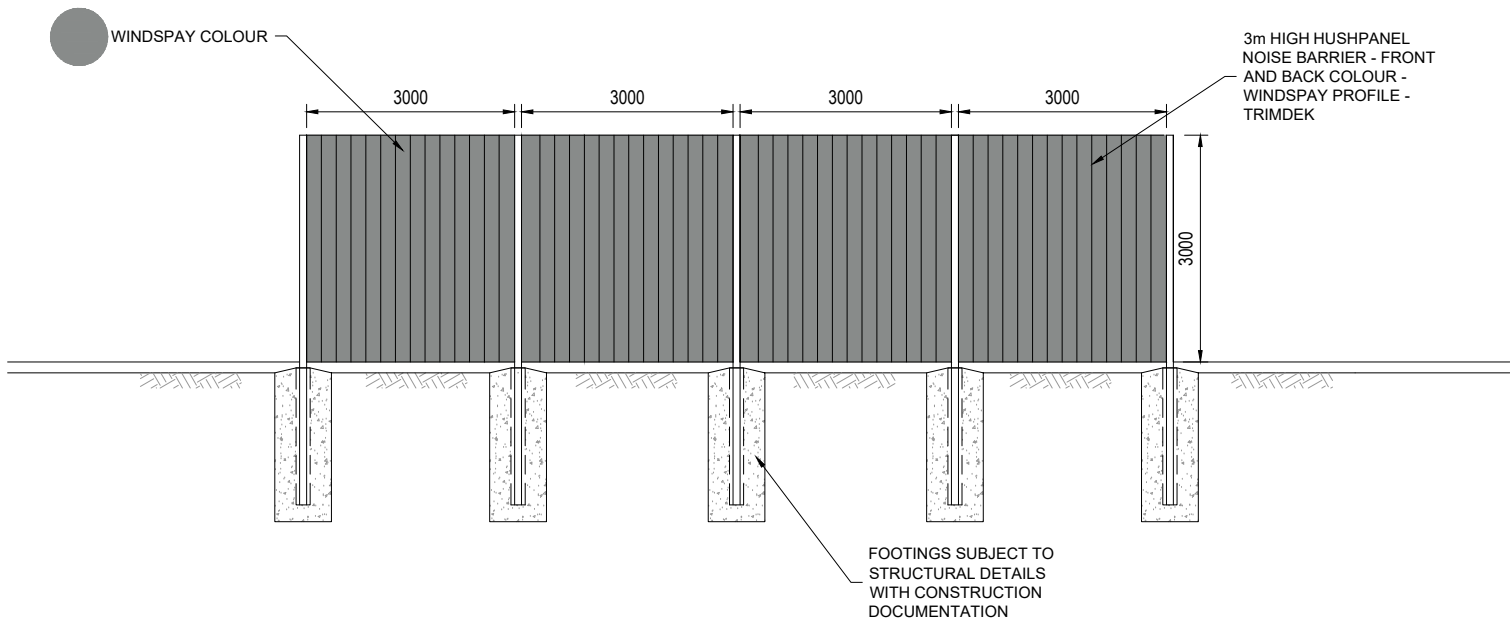
TYPICAL TRENCH SECTION FOR POWER CONNECTION  
N.T.S.



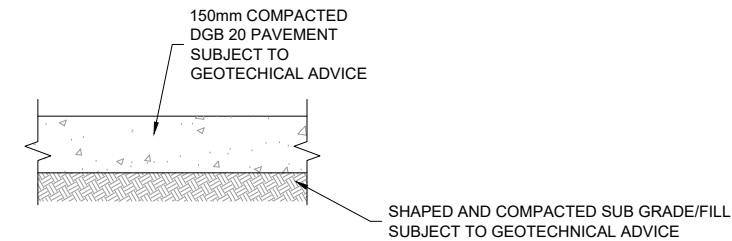
LEVEL SPREADER  
N.T.S.



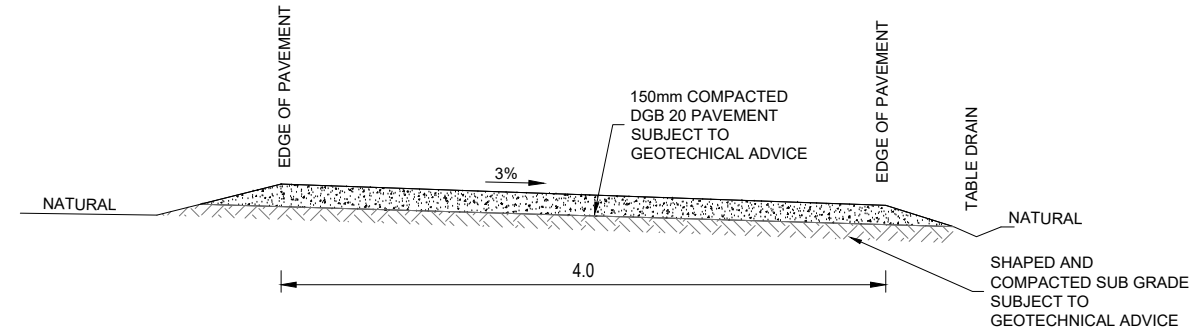
DIVERSION BANK AND CHANNEL  
N.T.S.



HUSH PANEL WALL DETAIL  
N.T.S.



PAD PAVEMENT DETAIL  
SCALE 1:20 @ A3



TYPICAL ACCESS DRIVEWAY SECTION  
SCALE  
H:1:50 @ A3  
V:H:1:50 @ A3

D	04/12/23	ACCESS	PC	R.F.	
C	16/11/23	CHANGE WALL TYPE	PC	R.F.	
B	08/11/23	WALL DETAILS	PC	R.F.	
A	30/10/23	PRELIMINARY ISSUE	PC	R.F.	
REV	DATE	DESCRIPTION	INITIAL	APPR.	



**hdb**  
TownPlanning & Design  
1st Floor, 44 Church Street, PO Box 40, MAITLAND NSW 2320  
P: (02) 4933 6682 F: (02) 4933 6683  
E: admin@hdb.com.au W: www.hdb.com.au  
ABN 35 078 017 508

© COPYRIGHT 2022 - HUNTER DEVELOPMENT BROKERAGE PTY LTD  
All rights reserved. Hunter Development Brokerage Pty Ltd advises that this document and all information contained therein is protected by copyright under the Australian Copyright Act 1968. Reproduction of this document in part or whole and/or use without the written permission from Hunter Development Brokerage Pty Ltd constitutes a breach of copyright. The document may only be used for the purposes for which it was commissioned and in accordance with the Terms of Engagement for the commission. Any reference to the document must include the document in its entirety and also include reference to Hunter Development Brokerage Pty Ltd.

SURVEY BY:	
DATUM:	
REDUCED LEVEL:	
ORIGIN OF LEVELS:	
CONTOUR INTERVAL:	
DESIGNED: R.F.	DRAWN: S.B.
CHECKED: R.F.	APPROVED: R.F.

CLIENT  
**CLEAN ENERGY TRANSFER FUND PTY LTD**

PLAN:	LONGITUDINAL SECTION:	CROSS SECTION:
	HORIZ. 1:200	HORIZ. 1:200
	VERT. 1:200	VERT. 1:200

PROJECT <b>PROPOSED BATTERY ENERGY STORAGE SYSTEM</b> <b>LOT 21 DP 731407</b> <b>105 MERRIWA ROAD, DENMAN</b>
DRAWING TITLE <b>DETAILS</b>
SHEET 10 OF 11 SHEETS

HDB Job No <b>23046</b>	REVISION <b>D</b>
DWG No <b>23046(CD) - 11</b>	
<b>CONCEPT</b> <small>NOT FOR CONSTRUCTION</small>	