

GENERAL NOTES:

1. ALL LEVELS ARE TO AUSTRALIAN HEIGHT DATUM AND ALL COORDINATES ARE TO MAP GRID OF AUSTRALIA (MGA) ZONE 56.
2. ALL EXISTING SURFACE LEVELS SHOWN ON THE ENGINEERING DRAWINGS HAVE BEEN INTERPOLATED FROM A DIGITAL TERRAIN MODEL. THESE LEVELS HAVE BEEN USED AS THE BASIS FOR ALL ENGINEERING DESIGN AND DETERMINATION OF QUANTITIES AND ARE ACCURATE TO WITHIN $\pm 0.05\text{m}$.
3. ALL WORKS TO BE CARRIED OUT IN ACCORDANCE WITH AS2124-1992 GENERAL CONDITIONS OF CONTRACT, THE ROAD & DRAINAGE SPECIFICATION, APPROVED MUNICIPALITY SPECIFICATIONS AND STANDARD DRAWINGS AND TO THE SATISFACTION OF THE SUPERINTENDENT AND THE MUNICIPAL ENGINEER OR HIS REPRESENTATIVE.
4. ROAD CHAINAGES REFER TO ROAD CENTRELINES. CHAINAGES FOR INTERSECTIONS AND CUL-DE-SACS REFER TO THE LIP OF KERB
5. THE LOCATION OF EXISTING SERVICES SHOULD BE DETERMINED BY THE CONTRACTOR PRIOR TO COMMENCING ANY EXCAVATION BY CONTACTING ALL LOCAL SERVICE AUTHORITIES. ANY EXISTING SERVICES SHOWN ON THESE DRAWINGS ARE OFFERED AS A GUIDE ONLY AND ARE NOT GUARANTEED AS CORRECT.
6. WHERE REQUIRED ANY BUILDINGS, TROUGHS, FENCES AND OTHER STRUCTURES ON SITE ARE TO BE REMOVED AS DIRECTED BY THE ENGINEER. THE COST OF REMOVAL IS TO BE INCLUDED IN THE OVERALL EARTHWORKS FIGURE UNLESS A SPECIFIC ITEM FOR REMOVAL IS DENOTED IN THE SCHEDULE.
7. ALL EXCAVATED ROCK AND SURPLUS SPOIL TO BE REMOVED AND DISPOSED OFF SITE UNLESS NOTED OTHERWISE.
8. ALL FILLING SHALL BE TO A LEVEL 150mm BELOW THE FINISHED SURFACE LEVEL SHOWN AND COMPACTED AS PER AS-3798-1998. FILLING MATERIAL IS TO BE IN ACCORDANCE WITH THE SPECIFICATION & TO THE SATISFACTION OF COUNCIL AND THE SUPERINTENDENT.
9. ALL BATTERS SHALL BE 1 IN 6, UNLESS OTHERWISE SHOWN.
10. NO FILL OR STOCKPILING OF MATERIAL IS TO BE PLACED ON ANY RESERVE FOR PUBLIC OPEN SPACE UNLESS OTHERWISE DIRECTED OR APPROVED BY THE SUPERINTENDENT.
11. TBM'S TO BE RE-ESTABLISHED BY THE LICENSED SURVEYOR IF FOUND TO BE MISSING AT THE COMMENCEMENT OF CONSTRUCTION. THE CONTRACTOR WILL BE RESPONSIBLE FOR CARE AND MAINTENANCE OF T.B.M.'S THEREAFTER.
12. AT LEAST 3 DAYS PRIOR TO COMMENCING WORK ON EXCAVATIONS IN EXCESS OF 150mm DEEP, A NOTIFICATION FORM MUST BE SENT TO WORKSAFE. THE CONTRACTOR IS TO COMPLY WITH WORKSAFE, THE MINES (SAFETY) REGULATION 1982, THE MINES ACT 1958 AND OCCUPATIONAL HEALTH AND SAFETY ACT 1985, 2004.
13. ALL SERVICE TRENCHES UNDER DRIVEWAYS, FOOTPATHS AND PARKING BAYS TO BE BACKFILLED WITH CLASS 2 CRUSHED ROCK. SERVICE TRENCHES LESS THAN 750mm BEHIND KERB AND CHANNEL OR PAVED TRAFFIC AREAS ARE ALSO TO BE BACKFILLED WITH COMPACTED CLASS 2 CRUSHED ROCK.
14. WHERE REQUIRED, ALL EXISTING DAMS, DEPRESSIONS AND DRAINS ARE TO BE BREACHED, DRAINED, DESLUDGED AND SHALL BE EXCAVATED TO A CLEAN FIRM BASE. THE SURFACE SHALL BE INSPECTED, APPROVED AND LEVELED BY THE ENGINEER PRIOR TO COMMENCEMENT OF FILLING. THE FILL SHALL BE APPROVED SELECTED ON SITE MATERIAL OR APPROVED IMPORTED MATERIAL. THE FILL SHALL BE PLACED UNDER CONTROLLED MOISTURE CONDITIONS IN ACCORDANCE WITH THE SPECIFICATION
15. NO BLASTING TO BE CARRIED OUT WITHIN THE MUNICIPALITY WITHOUT OBTAINING COUNCIL'S PERMISSION.
16. GAS AND WATER CONDUITS ARE TO BE,
Ø50mm . CLASS 12 P.V.C. - SINGLE SERVICE
Ø100mm. CLASS 12 P.V.C. - DUAL SERVICE (DRINKING AND NON DRINKING WATER)

WITH THE FOLLOWING MINIMUM COVER TO FINISHED SURFACE LEVELS:
ROAD PAVEMENT - 0.80m
VERGE, FOOTPATHS - 0.45m
17. ALL SERVICE CONDUIT TRENCHES UNDER ROAD PAVEMENTS TO BE BACKFILLED IN ACCORDANCE WITH RELEVANT MUNICIPALITY OR ROAD AUTHORITY SPECIFICATION .
18. AG/SUBSOIL DRAIN TO BE LAID BEHIND KERB WHERE REQUIRED IN ACCORDANCE WITH THE COUNCIL STANDARD DRAWINGS AND CONNECTED TO UNDERGROUND DRAINAGE.
19. WHERE CURVED PIPES ARE SHOWN ON THE FACE PLANS THEY ARE TO BE LAID PARALLEL TO THE BACK OF KERB, EXCEPT WHERE A RADIUS HAS BEEN SPECIFICALLY NOMINATED. CURVED PIPES ARE TO BE APPROVED BY COUNCIL AND IN ACCORDANCE WITH THE MANUFACTURERS SPECIFICATIONS.
20. WATER TAPPINGS TO BE LOCATED IN CENTRE OF ALLOTMENTS UNLESS OTHERWISE SHOWN.
21. TELSTRA ARE TO BE NOTIFIED 7 DAYS PRIOR TO PLACEMENT OF CONCRETE WORKS.
22. PAVEMENT DEPTHS MAY BE MODIFIED AS DIRECTED BY THE SUPERINTENDENT. PAVEMENT TO BE BOXED OUT TO MINIMUM DEPTH DENOTED, INSPECTED AND IF SUBGRADE IS IN QUESTION, FURTHER TESTING CARRIED OUT TO DETERMINE FINAL PAVEMENT DEPTH.
23. WHERE PAVEMENT IS CONSTRUCTED ON FILLING, FILL MATERIAL IS TO BE APPROVED BY THE SUPERINTENDENT AND COUNCIL. FILLING TO BE CONSTRUCTED IN LAYERS 150mm THICK WITH COMPACTION ACHIEVING 95% AUSTRALIAN STANDARD DENSITY.
24. WHEN PAVEMENT EXCAVATION IS IN ROCK ALL LOOSE MATERIAL (INCLUDING ROCKS AND

**BEFORE
YOU DIG**
www.byda.com.au
Zero Damage - Zero Harm



DRAWING	DESCRIPTION	SHEET No.	REVISION
CF100	FACE SHEET - SHEET 1	1	A
CF200	KEY MAP - SHEET 1	2	A
CF201	DESIGN DRAWINGS - SHEET 2	3	A
CF202	DESIGN DRAWINGS - SHEET 3	4	A
CF203	DESIGN DRAWINGS - SHEET 4	5	A
CF300	CROSS SECTIONS - SHEET 1	6	A
CF400	TURNING TEMPLATES - SHEET 1	7	A
CF400	TURNING TEMPLATES - SHEET 2	8	A

LEGEND

DESCRIPTION	EXISTING	PROPOSED
WATER MAIN, VALVE AND HYDRANT		
WATER RECYCLED		
UNDERGROUND ELECTRICITY		
OVERHEAD ELECTRICITY & POLE		
TELECOMMUNICATIONS & SERVICE PIT		
OPTIC FIBRE		
OVERHEAD TELECOMMUNICATIONS		
GAS MAIN		
BRANCH SEWER & MAINTENANCE STRUCTURE		
SEWER & MAINTENANCE STRUCTURE		
SEWER RISING MAIN		
CENTRAL INVERT		
COUNCIL STORM WATER DRAIN AND PIT		
STORM WATER DRAINAGE PROPERTY INLETS		
COUNCIL STORMWATER PITS		
HOUSE DRAIN		
AG DRAIN AND FLUSHER		
MWC STORMWATER DRAIN & PIT		
MWC STORMWATER PITS		
GAS & WATER CONDUITS		
CONCRETE VEHICLE CROSSING		
RIDGE / CHANGE OF GRADE LINE		
SURFACE CONTOUR MINOR		
SURFACE CONTOUR MAJOR		
SIGN AND POST		
PERMANENT SURVEY MARK		
TEMPORARY BENCH MARK		
BOLLARD		
LIMIT OF WORKS		
RETAINING WALL		
FENCE - TREE PROTECTION		
FENCE - VEHICLE EXCLUSION		
FENCES		
GUARD RAIL		
OVERLAND FLOW PATH		
LOT FALL DIRECTION		
LOT DIMENSION		
LOT AREA		
PARKED PASSENGER VEHICLE		
KERB TRANSITION		

SERVICE LOCATION TABLE

ROAD NAME	POTABLE WATER		NBN (TELECOM)		ELECTRICITY			
	SIDE	OFFSET	SIDE	OFFSET	POLE		U/G CABLE	
					SIDE	OFFSET	SIDE	OFFSET
ROAD 1 (WESTERN)	WEST	1.60	WEST	1.00	WEST	1.0x	WEST	0.50
ROAD 1 (EASTERN)	EAST	1.60	EAST	1.00	EAST	1.0x	EAST	0.50
ROAD 2	NORTH	1.60	SOUTH	1.00	SOUTH	1.0x	SOUTH	0.50
ROAD 3	NORTH	0.50	SOUTH	1.00	SOUTH	1.0x	SOUTH	0.50
ROAD 4	NORTH	0.50	SOUTH	1.00	SOUTH	1.0x	SOUTH	0.50
ROAD 5	NORTH	1.60	SOUTH	1.00	SOUTH	1.0x	SOUTH	0.50
ROAD 6	NORTH	0.50	SOUTH	1.00	SOUTH	1.0x	SOUTH	0.50
ROAD 7	WEST	1.60	EAST	1.00	EAST	1.0x	EAST	0.50

1. TELECOMMUNICATIONS AND ELECTRICITY CABLES TO BE CONSTRUCTED IN A COMMON TRENCH IN ACCORDANCE WITH ELECTRICITY AUTHORITY STANDARD DRG's.
2. x = OFFSET FROM BACK OF KERB

A	PRELIMINARY ISSUE TO CLIENT	AW	MAY 2024
Rev	Amendments	Approved	Date

Scale



© Spiire Australia Pty Ltd All Rights Reserved
This document is produced by Spiire Australia Pty Ltd solely for the benefit of and use by the client in accordance with the terms of the retainer. Spiire Australia Pty Ltd does not and shall not assume any responsibility or liability whatsoever to any third party arising out of any use or reliance by third party on the content of this document.



16 BRIDGE STREET BENDIGO
VICTORIA 3550 AUSTRALIA T 61 3 5448 2500
spiire.com.au ABN 55 050 029 635

Designed
C GYORFFY

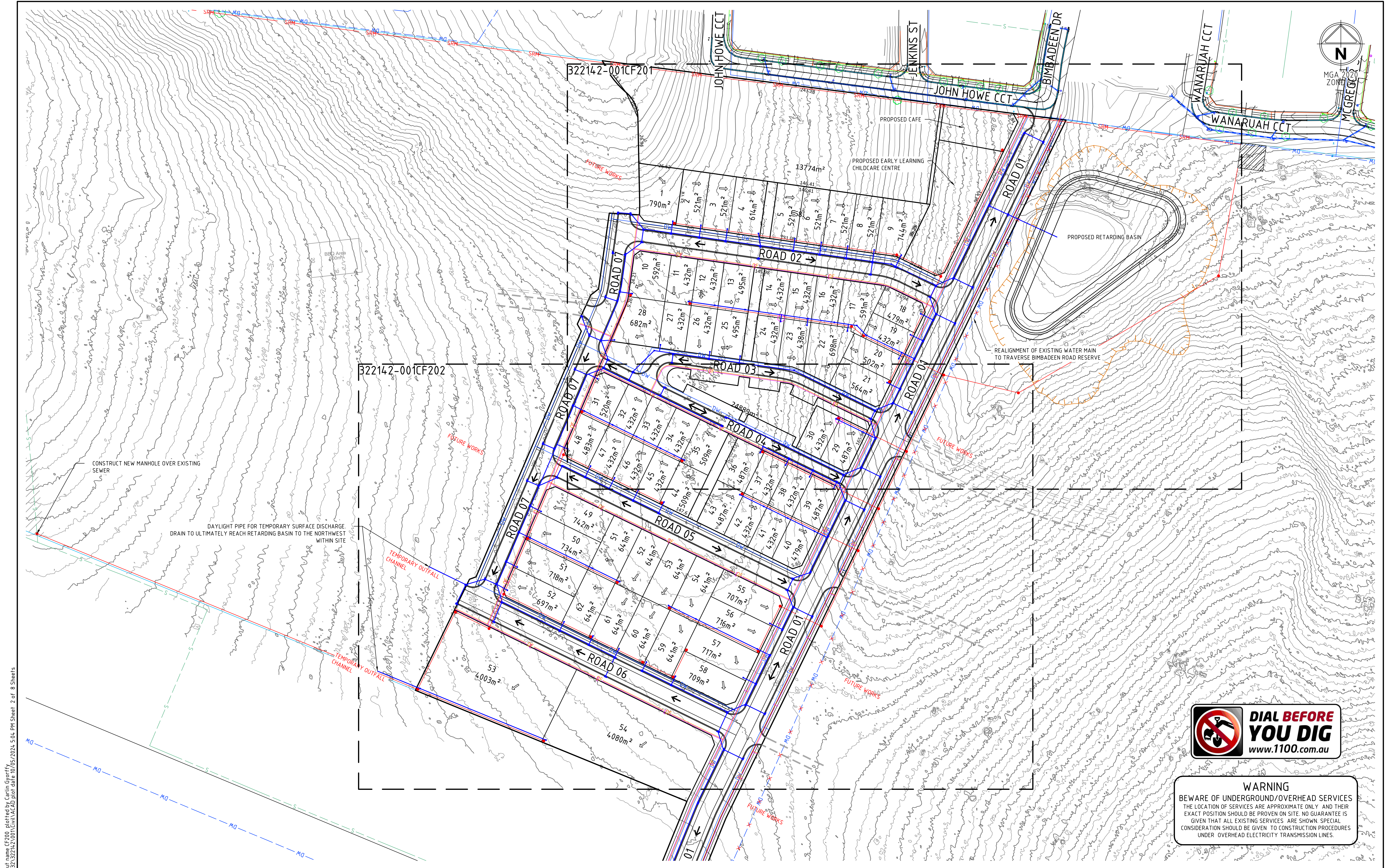
Authorised
A WILKIE

Checked
M RULE

Date
MAY 2024

IRONBARK ROAD STAGE 1
101/103 IRONBARK RD, MUSWELLBROOK
FUNCTIONAL LAYOUT PLAN
FACE SHEET - SHEET 1
 MUSWELLBROOK SHIRE COUNCIL
 FREEDOM DEVELOPMENT GROUP PTY LTD

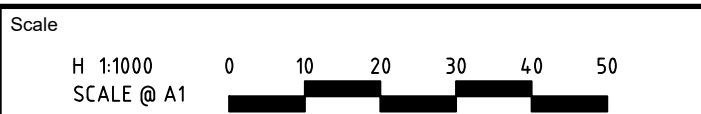
PRELIMINARY Drg No 322142-001CF100 Rev A



WARNING
BEWARE OF UNDERGROUND/OVERHEAD SERVICES
THE LOCATION OF SERVICES ARE APPROXIMATE ONLY, AND THEIR EXACT POSITION SHOULD BE PROVEN ON SITE. NO GUARANTEE IS GIVEN THAT ALL EXISTING SERVICES ARE SHOWN. SPECIAL CONSIDERATION SHOULD BE GIVEN TO CONSTRUCTION PROCEDURES UNDER OVERHEAD ELECTRICITY TRANSMISSION LINES.

file name: 322142-001CF200.dwg, layout name: CF200, plotted by: Caitlin Gyorffy, file location: \\spire\backend\data\322142\001\001.dwg, plot date: 10/05/2024 5:04 PM, Sheet 2 of 8 Sheets

Rev	Amendments	Approved	Date
A	PRELIMINARY ISSUE TO CLIENT	MR	MAY 24



ISO 9001
ISO 45001
ISO 14001
System Certified

© Spiire Australia Pty Ltd All Rights Reserved
This document is produced by Spiire Australia Pty Ltd solely for the benefit of and use by the client in accordance with the terms of the retainer. Spiire Australia Pty Ltd does not and shall not assume any responsibility or liability whatsoever to any third party arising out of any use or reliance by third party on the content of this document.



16 BRIDGE STREET BENDIGO
VICTORIA 3550 AUSTRALIA T 61 3 5448 2500
spiire.com.au ABN 55 050 029 635



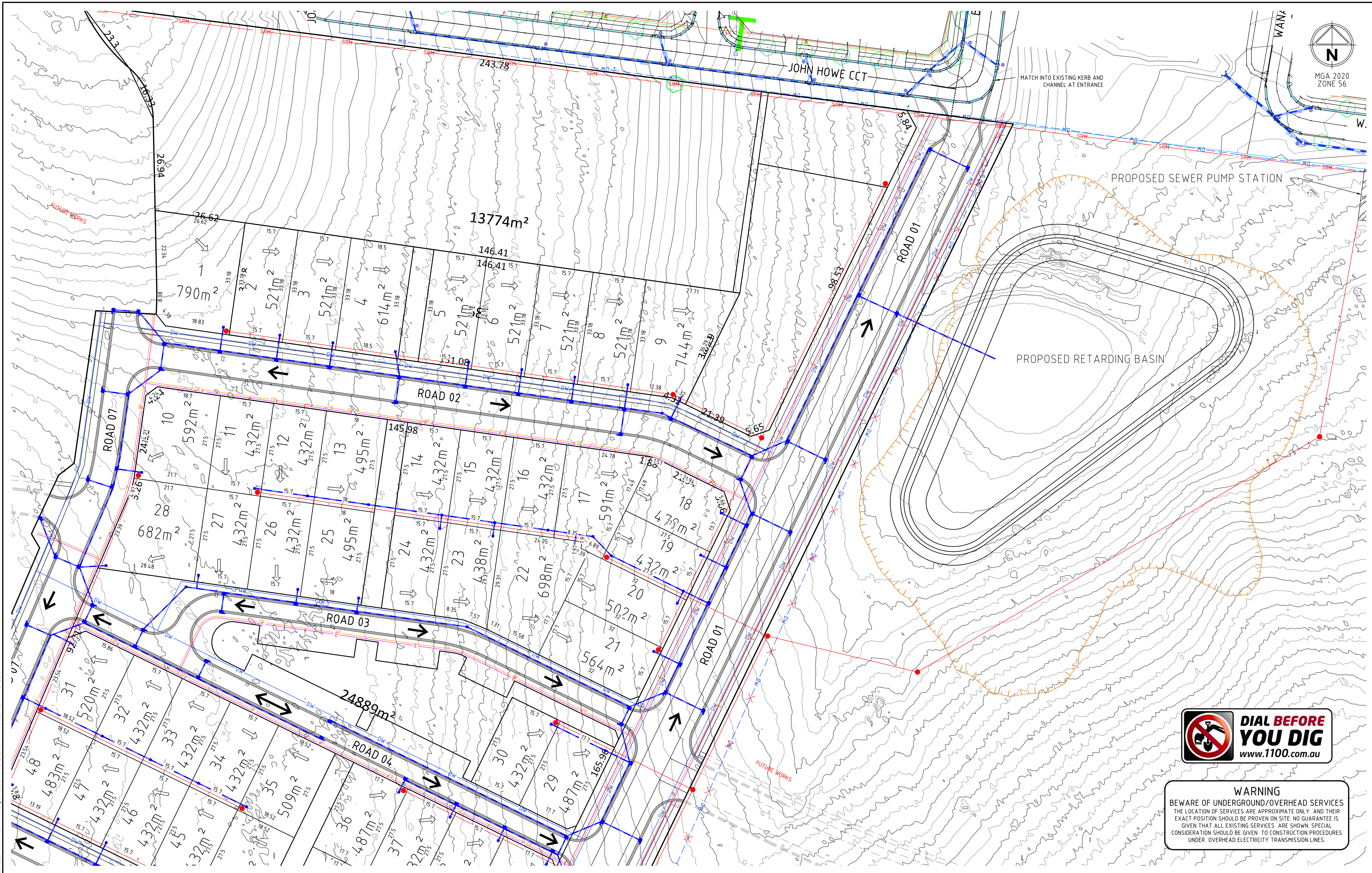
Designed
C GYORFFY
Authorised

Checked
M RULE
Date
MAY 2024

IRONBARK ROAD STAGE 1
101/103 IRONBARK RD, MUSWELLBROOK
FUNCTIONAL LAYOUT PLAN
DESIGN DRAWINGS - KEY MAP LAYOUT PLAN
MUSWELLBROOK SHIRE COUNCIL
FREEDOM DEVELOPMENT GROUP PTY LTD

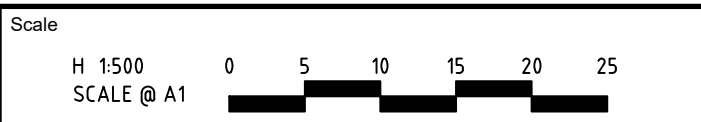
PRELIMINARY Drg No **322142-001CF200A** Rev

file name: 322142-001CF201A.dwg, layout name: C2001, plotted by: Carlin Gyorffy, file location: \\spire\shared\322142-001CF201A\322142-001CF201A.dwg, plot date: 10/05/2024 5:04 PM, Sheet: 3 of 8 Sheets



WARNING
BEWARE OF UNDERGROUND/OVERHEAD SERVICES
THE LOCATION OF SERVICES ARE APPROXIMATE ONLY, AND THEIR EXACT POSITION SHOULD BE PROVEN ON SITE. NO GUARANTEE IS GIVEN THAT ALL EXISTING SERVICES ARE SHOWN. SPECIAL CONSIDERATION SHOULD BE GIVEN TO CONSTRUCTION PROCEDURES UNDER OVERHEAD ELECTRICITY TRANSMISSION LINES.

A		PRELIMINARY ISSUE TO CLIENT	MR	MAY 24
Rev	Amendments		Approved	Date



System Certified

© Spiire Australia Pty Ltd All Rights Reserved
This document is produced by Spiire Australia Pty Ltd solely for the benefit of and use by the client in accordance with the terms of the retainer. Spiire Australia Pty Ltd does not and shall not assume any responsibility or liability whatsoever to any third party arising out of any use or reliance by third party on the content of this document.

spiire

16 BRIDGE STREET BENDIGO
VICTORIA 3550 AUSTRALIA T 61 3 5448 2500
spiire.com.au ABN 55 050 029 635

Designed
C GYORFFY

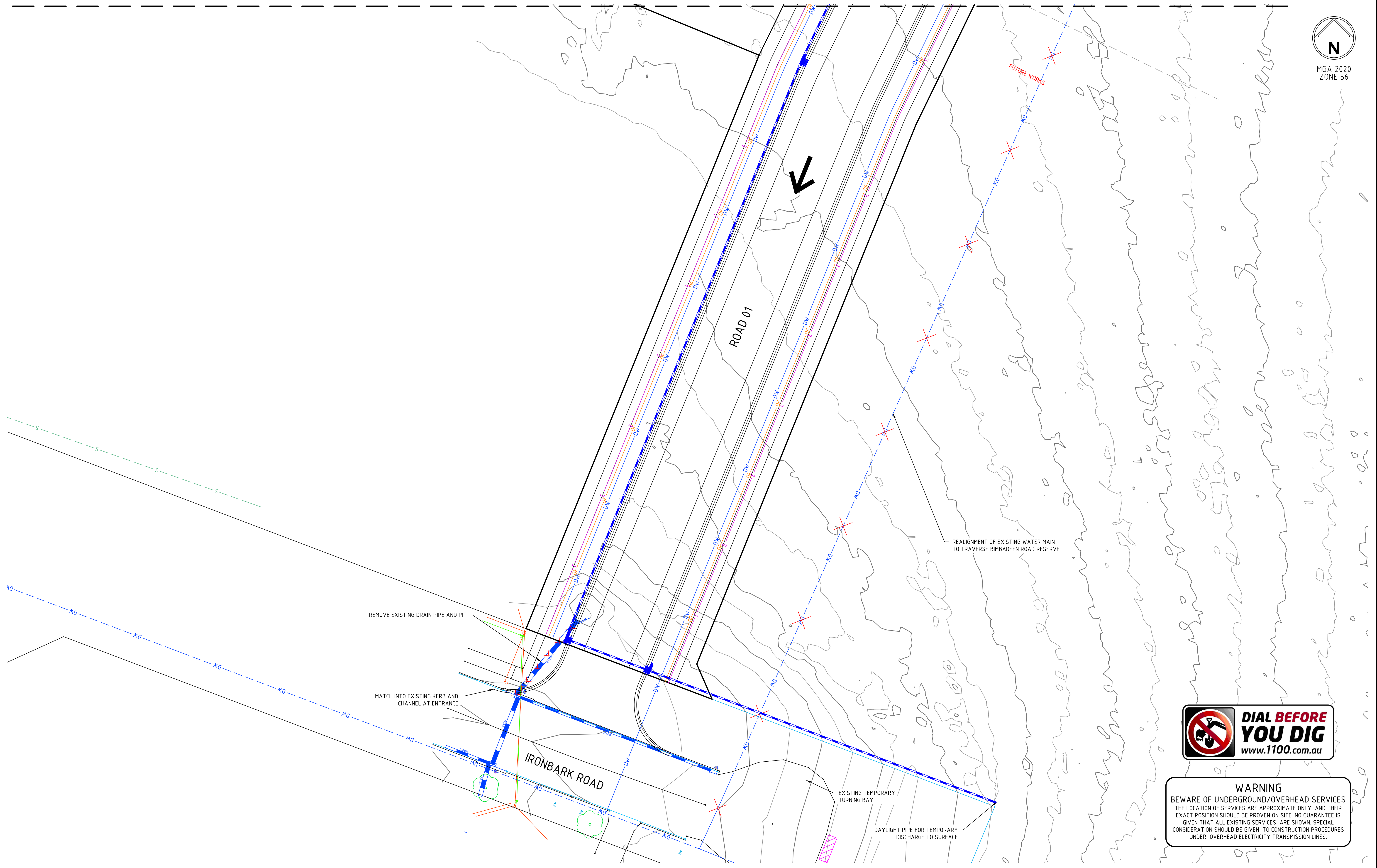
Authorised

Checked
M RULE

Date
MAY 2024

IRONBARK ROAD STAGE 1
101/103 IRONBARK RD, MUSWELLBROOK
FUNCTIONAL LAYOUT PLAN
DESIGN DRAWINGS - LAYOUT PLAN SHEET 1
MUSWELLBROOK SHIRE COUNCIL
FREEDOM DEVELOPMENT GROUP PTY LTD

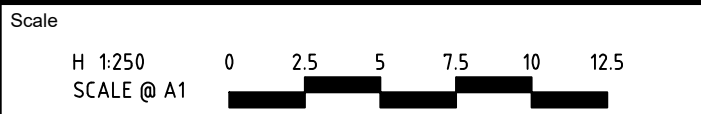
PRELIMINARY Drg No **322142-001CF201A** Rev



WARNING
BEWARE OF UNDERGROUND/OVERHEAD SERVICES
THE LOCATION OF SERVICES ARE APPROXIMATE ONLY AND THEIR EXACT POSITION SHOULD BE PROVEN ON SITE. NO GUARANTEE IS GIVEN THAT ALL EXISTING SERVICES ARE SHOWN. SPECIAL CONSIDERATION SHOULD BE GIVEN TO CONSTRUCTION PROCEDURES UNDER OVERHEAD ELECTRICITY TRANSMISSION LINES.

file name: 322142-001CF203A.dwg, layout: 0001, created by: Cgiffy, date: 10/05/2024 5:04 PM, sheet: 5 of 8

Rev	A	PRELIMINARY ISSUE TO CLIENT	MR	MAY 24
		Amendments	Approved	Date



© Spiire Australia Pty Ltd All Rights Reserved
This document is produced by Spiire Australia Pty Ltd solely for the benefit of and use by the client in accordance with the terms of the retainer. Spiire Australia Pty Ltd does not and shall not assume any responsibility or liability whatsoever to any third party arising out of any use or reliance by third party on the content of this document.



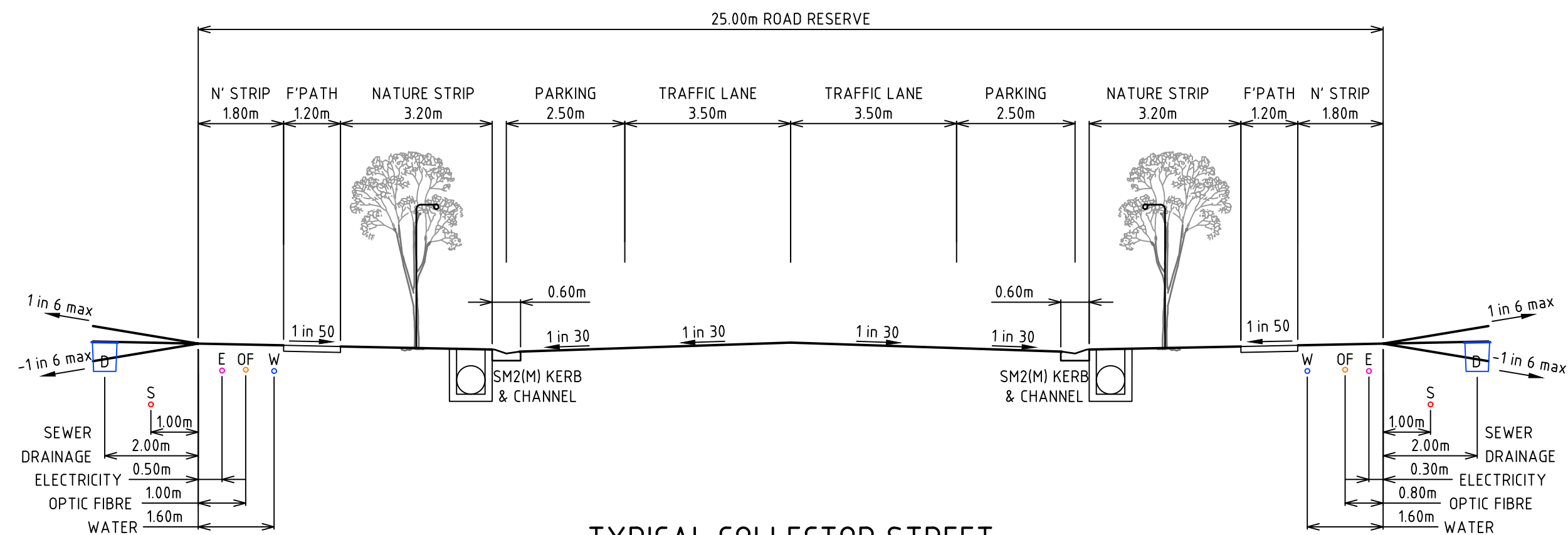
16 BRIDGE STREET BENDIGO
VICTORIA 3550 AUSTRALIA T 61 3 5448 2500
spiire.com.au ABN 55 050 029 635



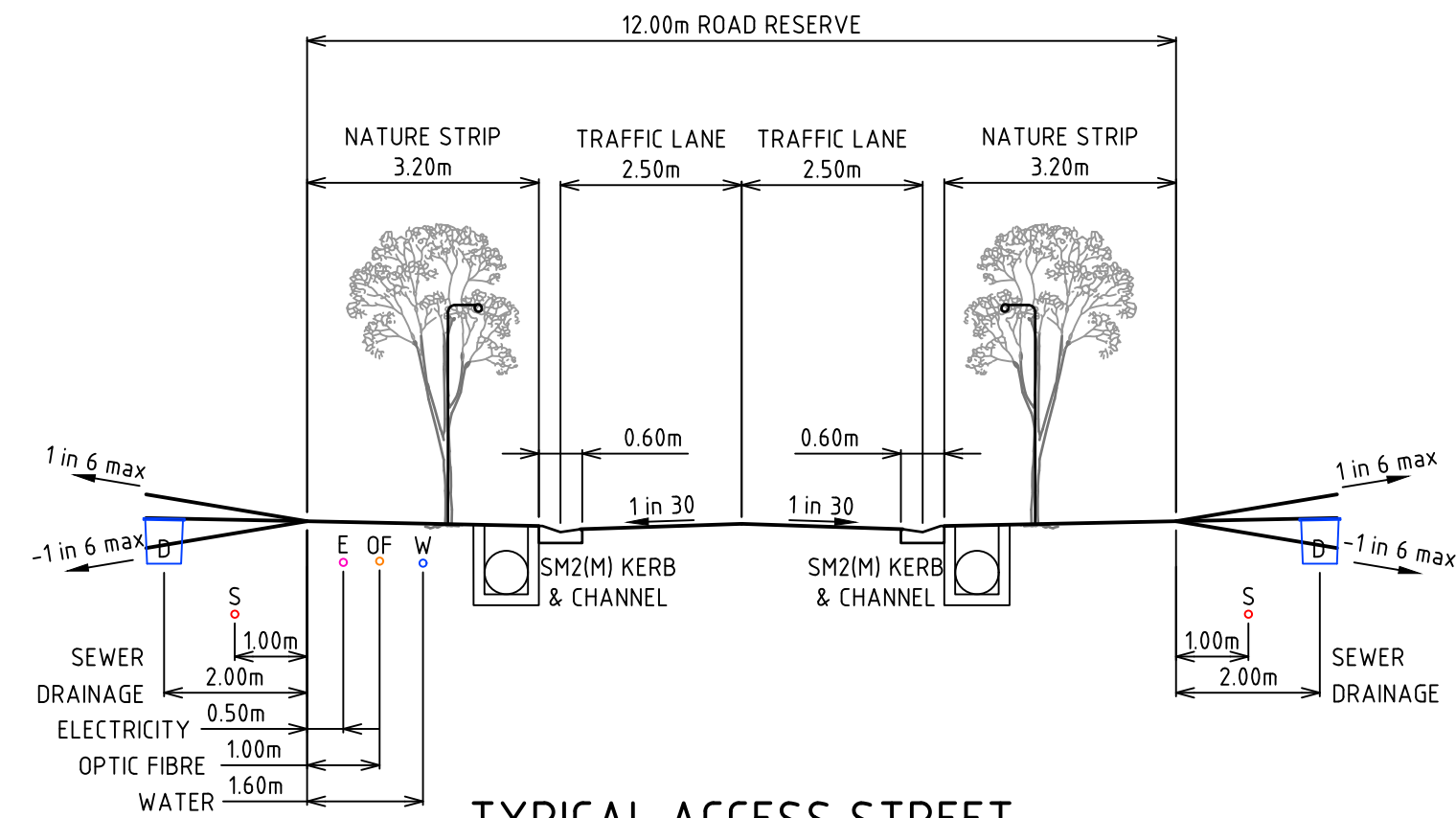
Designed
C GYORFFY
Authorised

Checked
M RULE
Date
MAY 2024

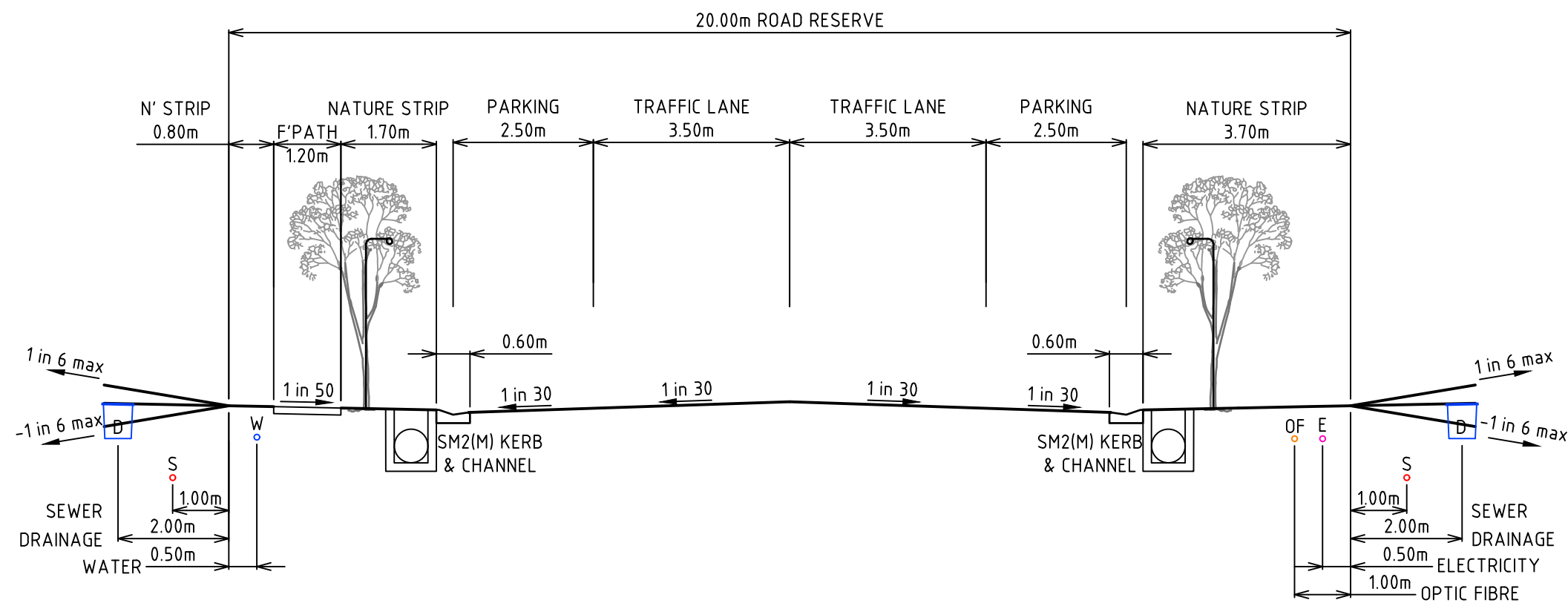
IRONBARK ROAD STAGE 1
101/103 IRONBARK RD, MUSWELLBROOK
FUNCTIONAL LAYOUT PLAN
DESIGN DRAWINGS - LAYOUT PLAN SHEET 3
MUSWELLBROOK SHIRE COUNCIL
FREEDOM DEVELOPMENT GROUP PTY LTD
PRELIMINARY 322142-001CF203A



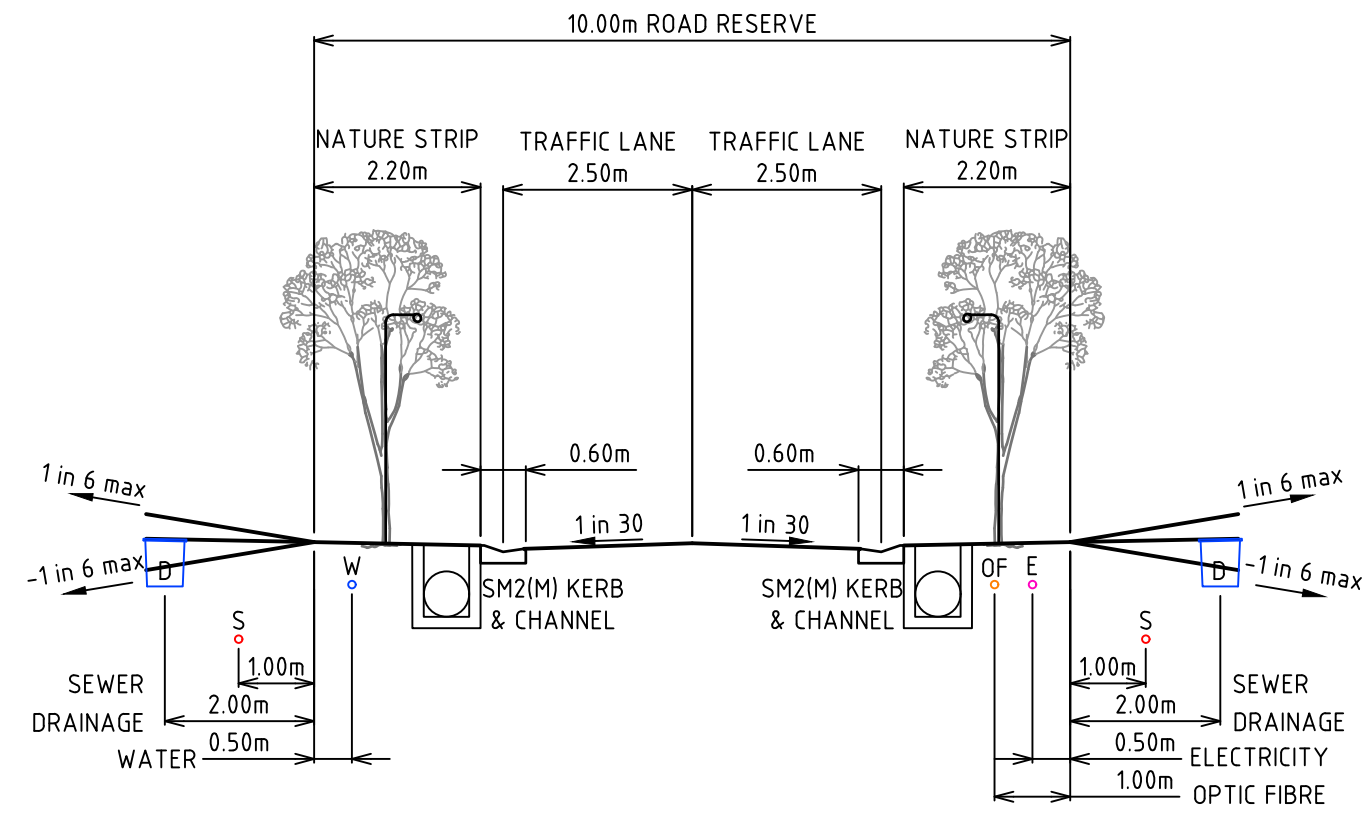
TYPICAL COLLECTOR STREET
25.0m WIDE RESIDENTIAL ROAD
NOT TO SCALE



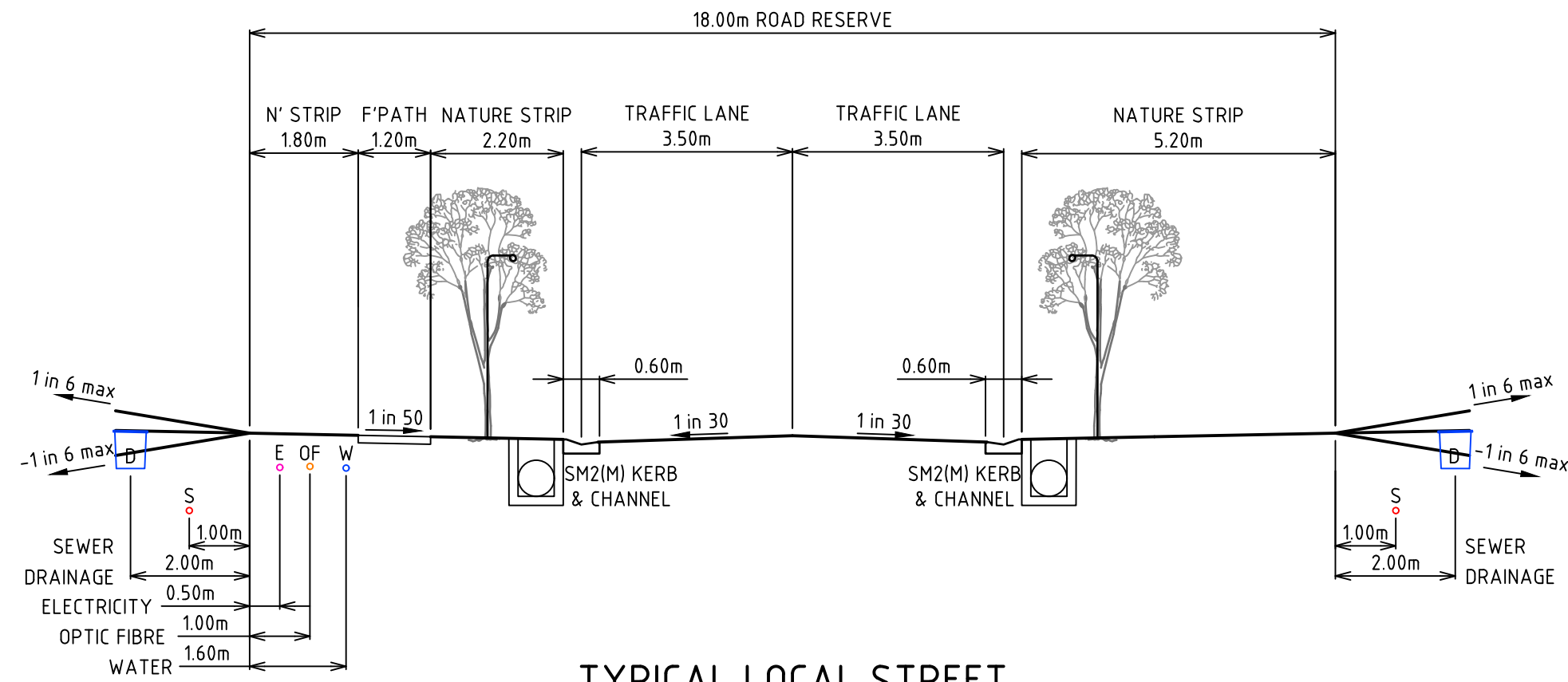
TYPICAL ACCESS STREET
12.0m WIDE RESIDENTIAL ROAD
NOT TO SCALE



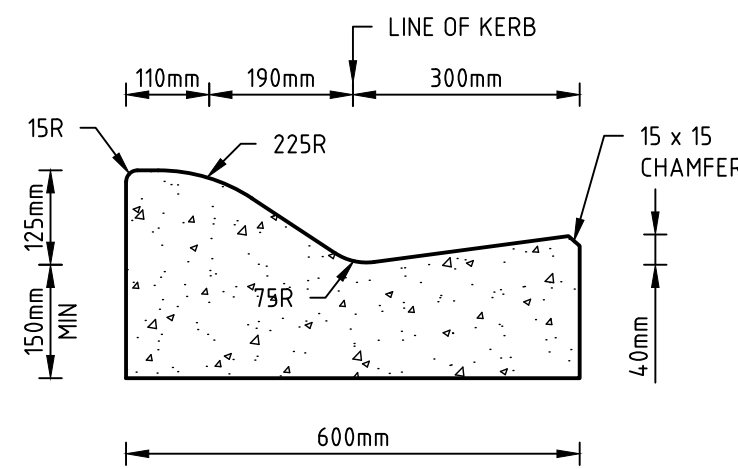
TYPICAL COLLECTOR STREET
20.0m WIDE RESIDENTIAL ROAD
NOT TO SCALE



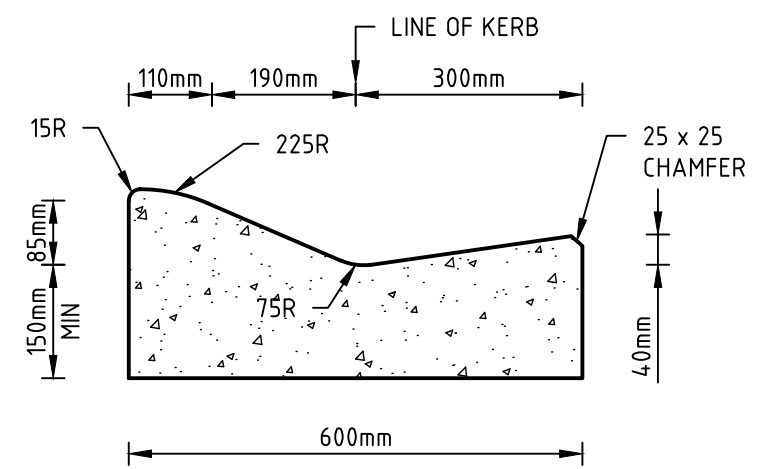
TYPICAL ACCESS STREET
10.0m WIDE RESIDENTIAL ROAD
NOT TO SCALE



TYPICAL LOCAL STREET
18.0m WIDE RESIDENTIAL ROAD
NOT TO SCALE



SM2



SM2 (MODIFIED)

Scale
NOT TO SCALE



© Spiire Australia Pty Ltd All Rights Reserved
This document is produced by Spiire Australia Pty Ltd solely for the benefit of and use by the client in accordance with the terms of the retainer. Spiire Australia Pty Ltd does not and shall not assume any responsibility or liability whatsoever to any third party arising out of any use or reliance by third party on the content of this document.



16 BRIDGE STREET BENDIGO
VICTORIA 3550 AUSTRALIA T 61 3 5448 2500
spiire.com.au ABN 55 050 029 635

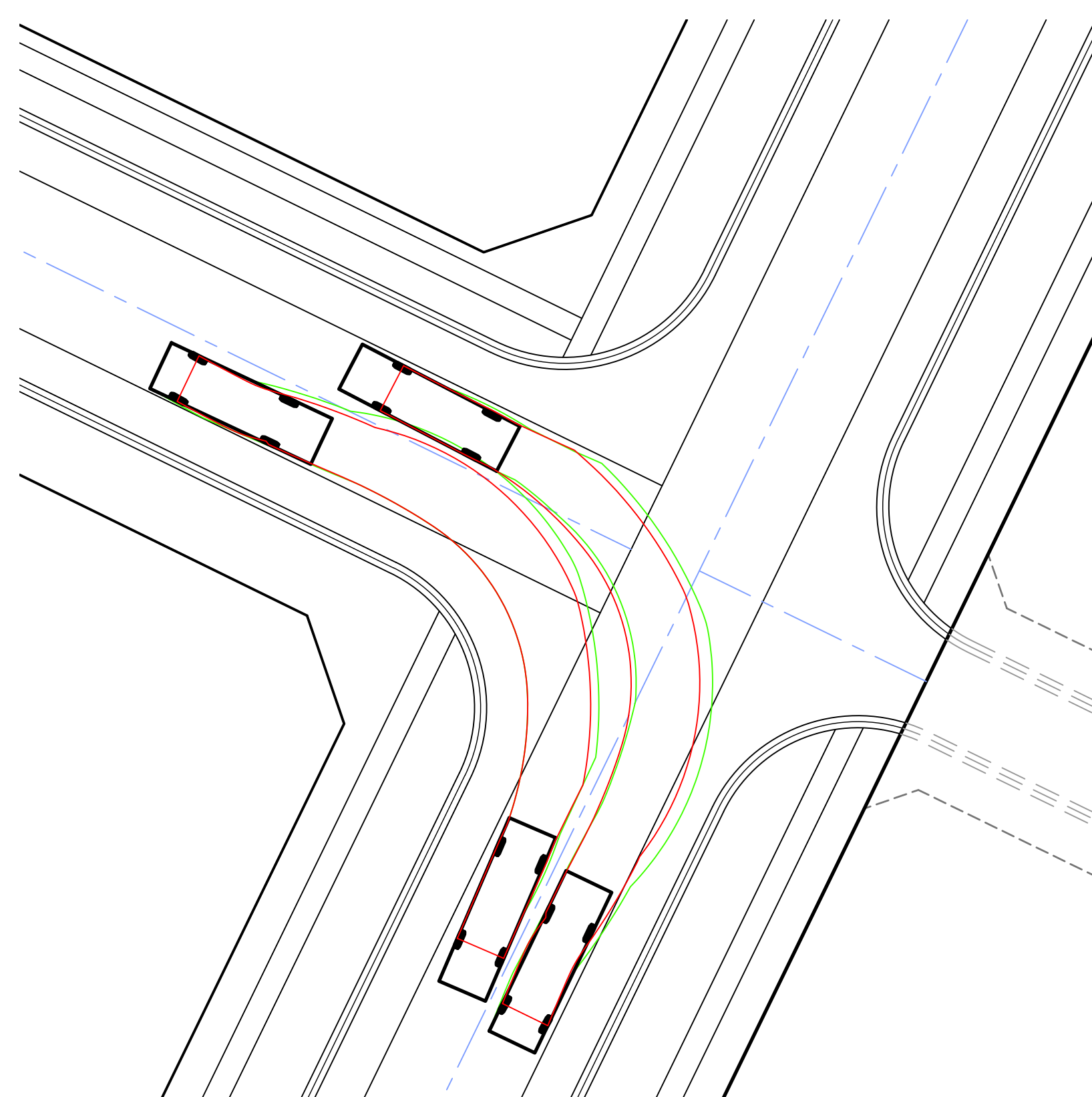


Designed
C GYORFFY
Authorised
A WILKIE

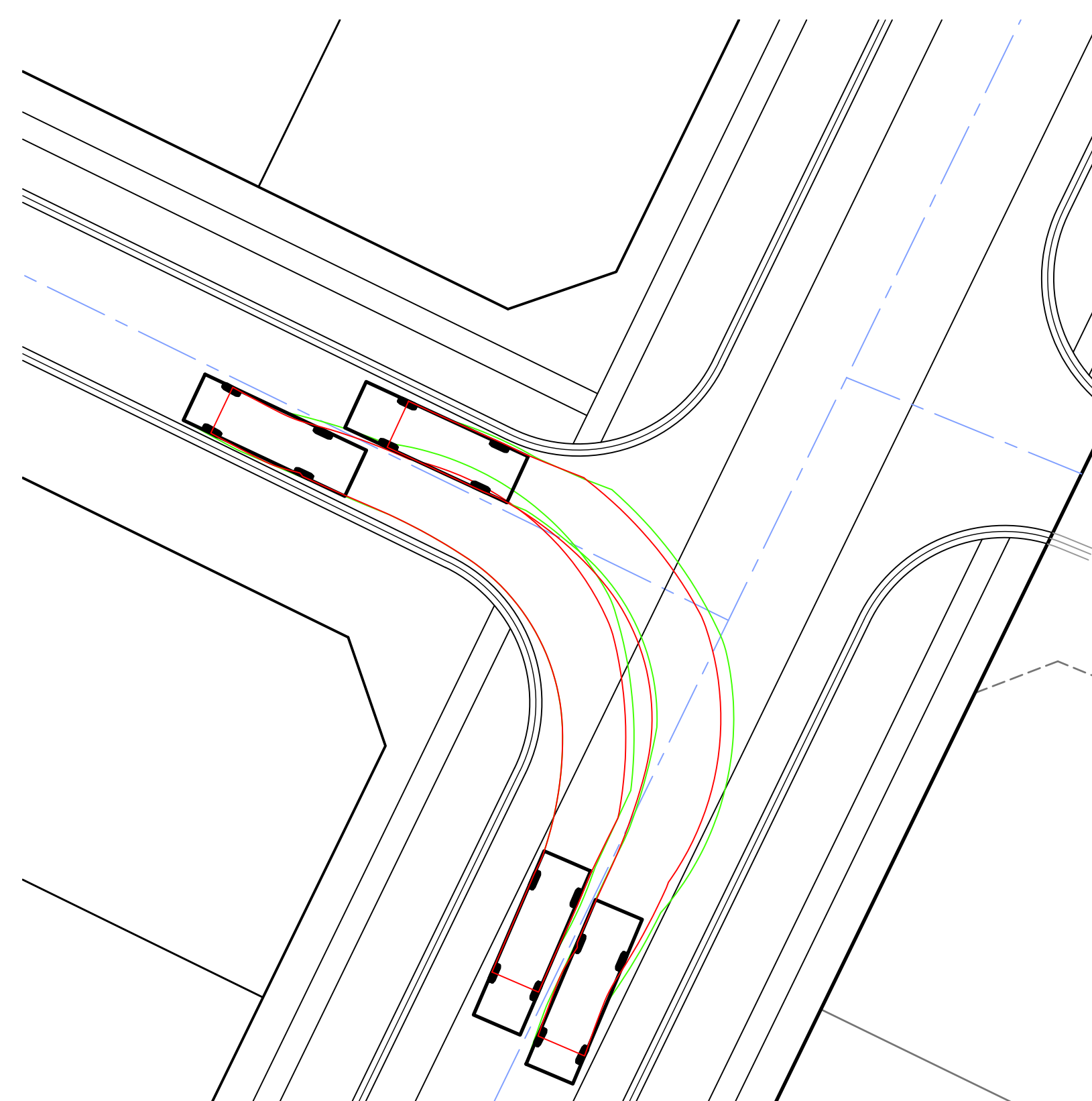
Checked
M RULE
Date
MAY 2024

IRONBARK ROAD STAGE 1
101/103 IRONBARK RD, MUSWELLBROOK
FUNCTIONAL LAYOUT PLAN
CROSS SECTIONS - TYPICAL SECTIONS
MUSWELLBROOK SHIRE COUNCIL
FREEDOM DEVELOPMENT GROUP PTY LTD

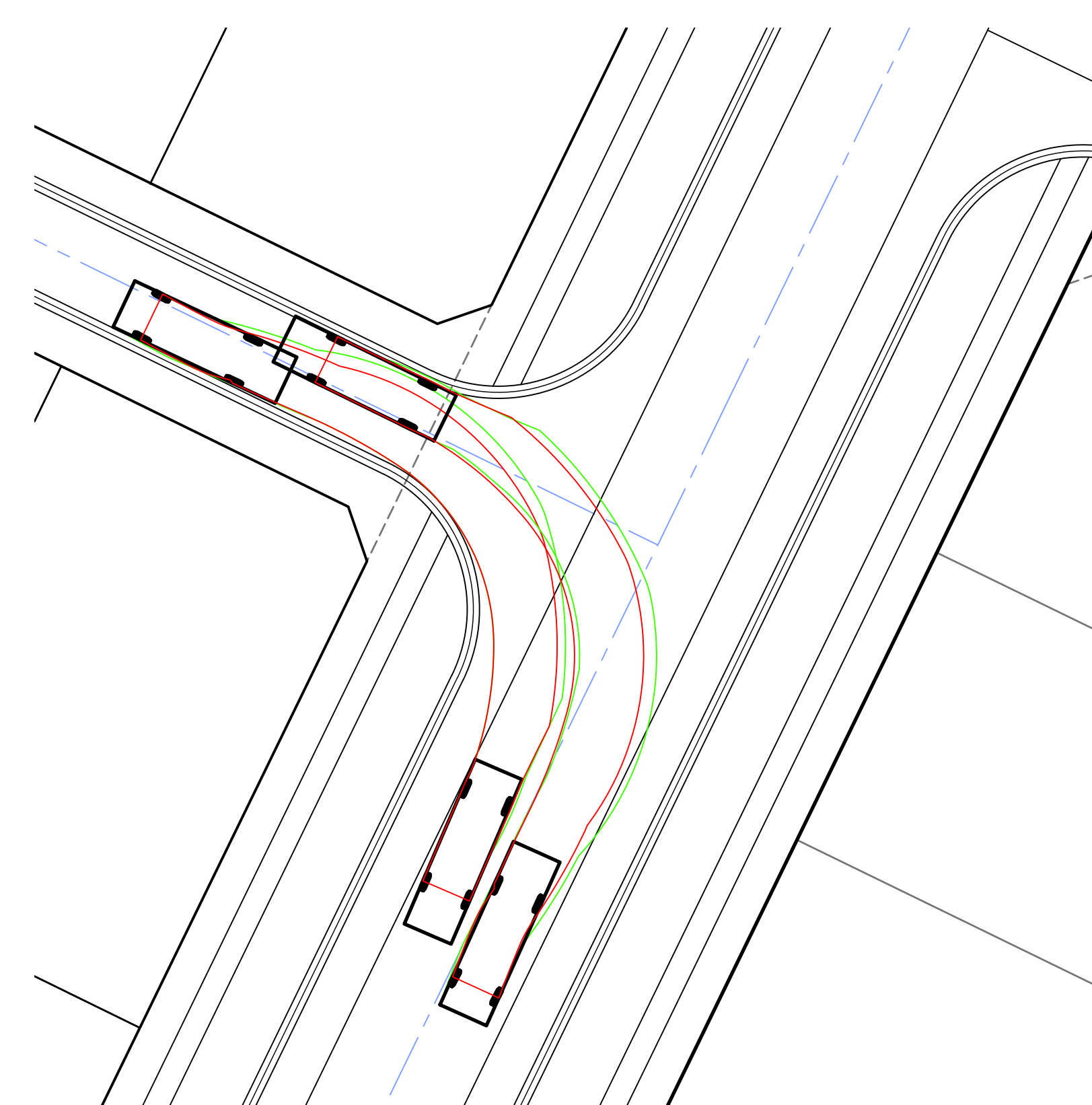
PRELIMINARY Drg No 322142-001CF300 Rev A



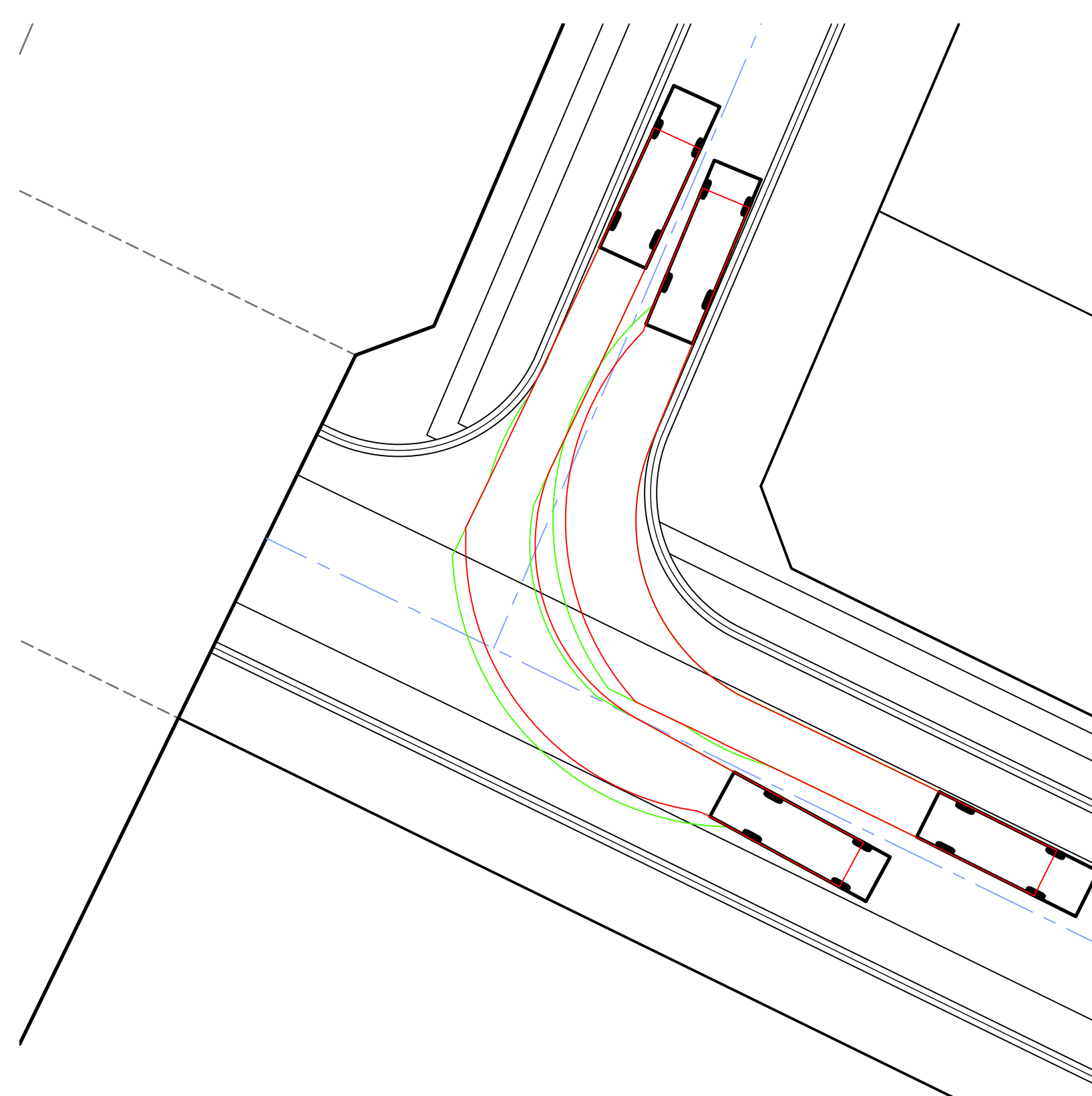
25m COLLECTOR STREET TO 20m COLLECTOR STREET T-INTERSECTION
8.8m SERVICE VEHICLE



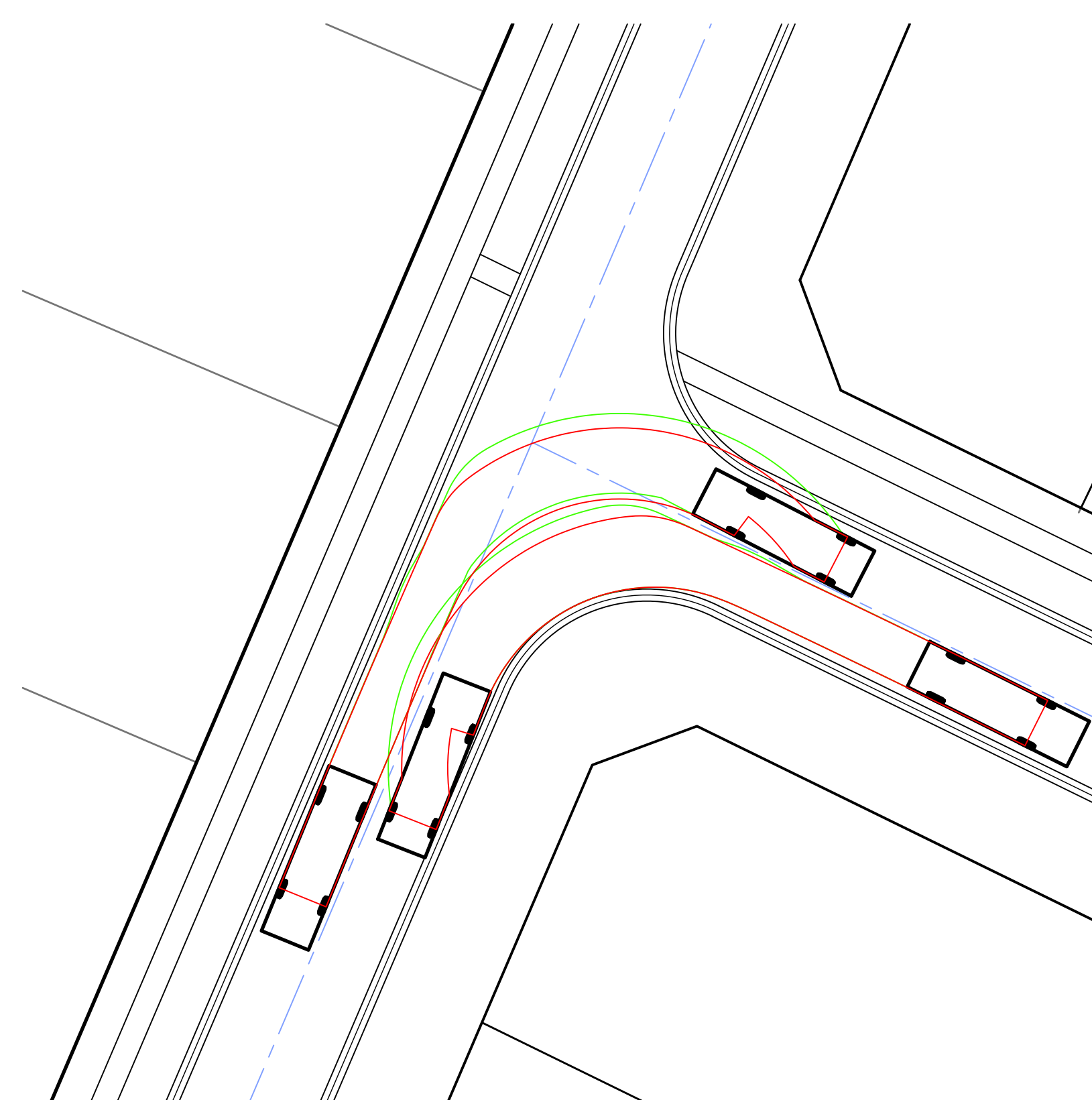
25m COLLECTOR STREET TO 18m LOCAL STREET T-INTERSECTION
8.8m SERVICE VEHICLE



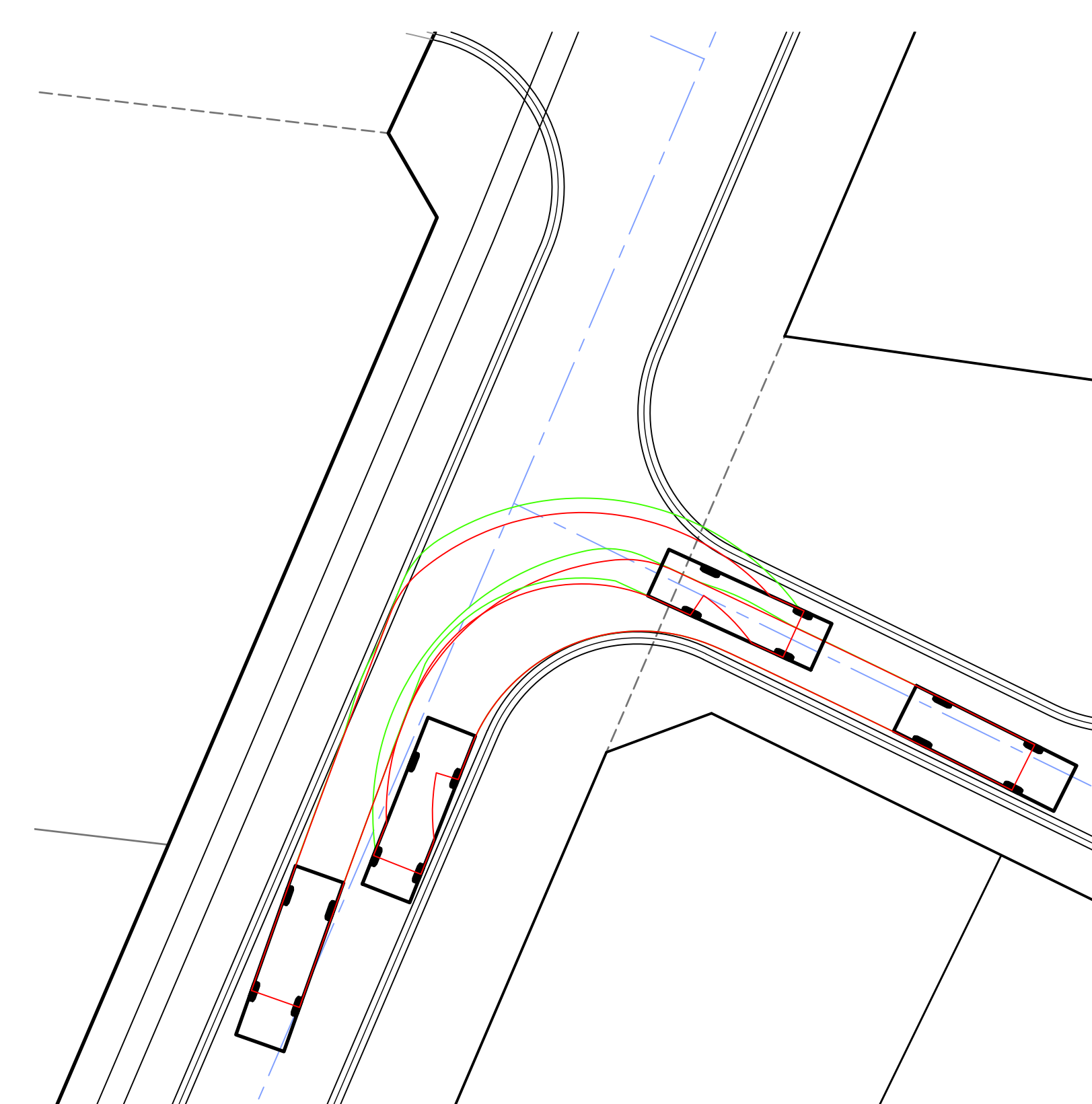
25m COLLECTOR STREET TO 10m ACCESS STREET T-INTERSECTION
8.8m SERVICE VEHICLE



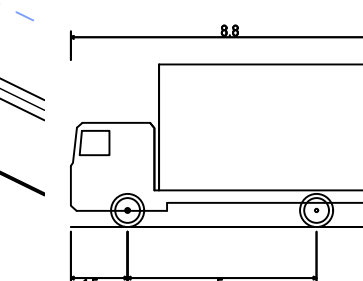
20m COLLECTOR STREET TO 18m LOCAL STREET T-INTERSECTION
8.8m SERVICE VEHICLE



18m LOCAL STREET AND 18m LOCAL STREET T-INTERSECTION
8.8m SERVICE VEHICLE



18m LOCAL STREET AND 10m ACCESS STREET T-INTERSECTION
8.8m SERVICE VEHICLE



Service Vehicle (8.8 m)	
Overall Length	8.800m
Overall Width	2.500m
Overall Body Height	4.300m
Min Body Ground Clearance	0.427m
Track Width	2.500m
Lock-to-lock time	4.00s
Curb to Curb Turning Radius	12.500m

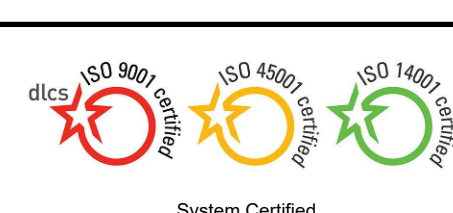
— VEHICLE WHEEL TRACK LINES
— VEHICLE OVERHANG LINES

A	PRELIMINARY ISSUE TO CLIENT	AW	MAY 2024
Rev	Amendments	Approved	Date

Scale

H 1:250 0 2.5 5 7.5 10 12.5

SCALE @ A1



© Spiire Australia Pty Ltd All Rights Reserved
This document is produced by Spiire Australia Pty Ltd solely for the benefit of and use by the client in accordance with the terms of the retainer. Spiire Australia Pty Ltd does not and shall not assume any responsibility or liability whatsoever to any third party arising out of any use or reliance by third party on the content of this document.

spiire

16 BRIDGE STREET BENDIGO
VICTORIA 3550 AUSTRALIA T 61 3 5448 2500
spiire.com.au ABN 55 050 029 635



Designed
C GYORFFY

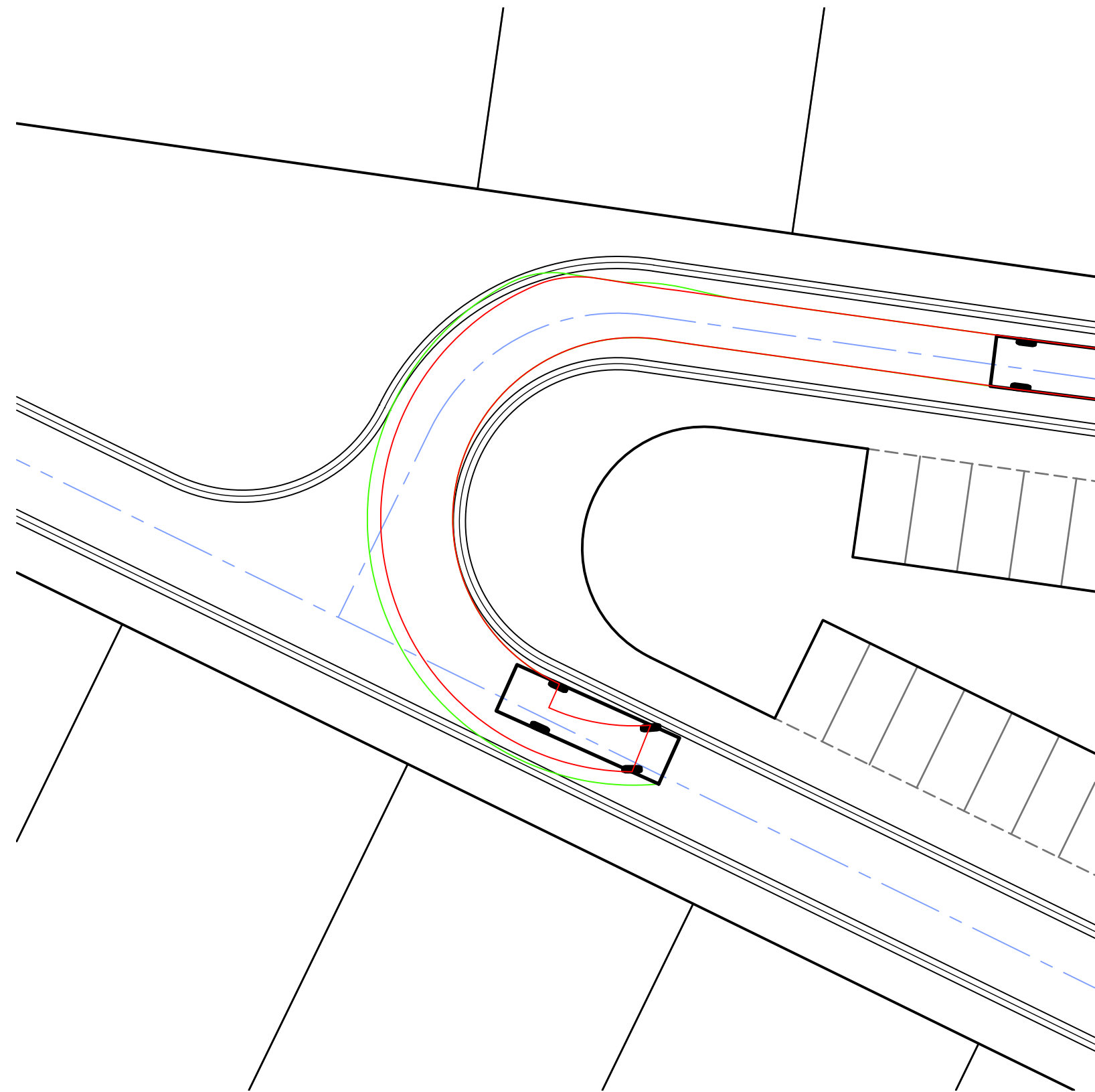
Authorised
A WILKIE

Checked
M RULE
Date
MAY 2024

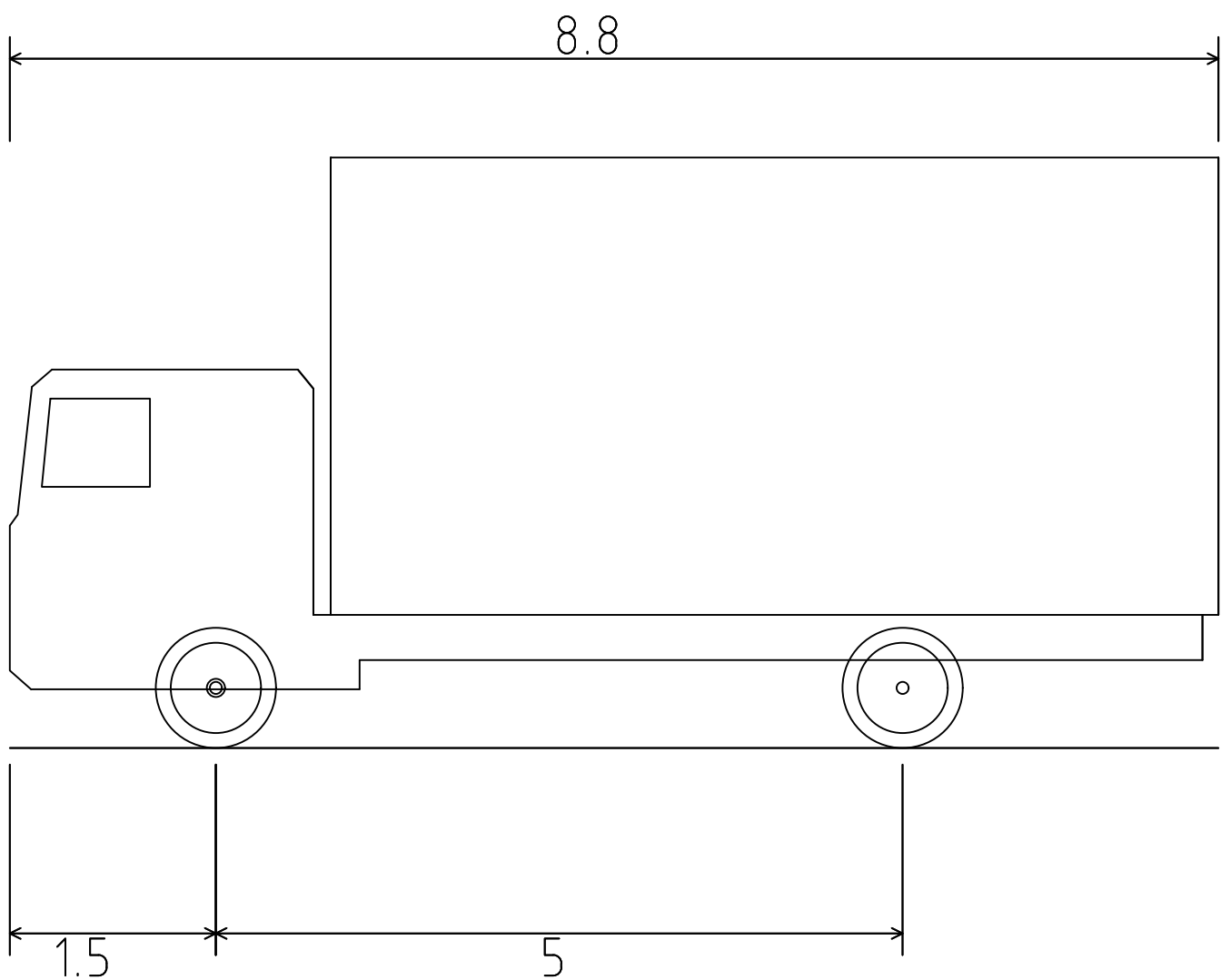
IRONBARK ROAD STAGE 1
101/103 IRONBARK RD, MUSWELLBROOK
FUNCTIONAL LAYOUT PLAN
TURNING TEMPLATES - SHEET 1
 MUSWELLBROOK SHIRE COUNCIL
 FREEDOM DEVELOPMENT GROUP PTY LTD

Drg No	Rev
322142-001CF400	A

file name 322142-001CF400.dwg layout name CF400 plotted by Carlin Gyorffy
file location \\spire.bendata\Data\32\322142\001\Civil\ACAD plot date 10/05/2024 5:04 PM Sheet 7 of 8 Sheets



ROAD 02 AND ROAD 03 T-INTERSECTION
8.8m SERVICE VEHICLE



Service Vehicle (8.8 m)	
Overall Length	8.800m
Overall Width	2.500m
Overall Body Height	4.300m
Min Body Ground Clearance	0.427m
Track Width	2.500m
Lock-to-lock time	4.00s
Curb to Curb Turning Radius	12.500m

— VEHICLE WHEEL TRACK LINES
— VEHICLE OVERHANG LINES

file: r:\p\322142-001CF400.dwg, layout: r\p\322142-001CF400.dwg, plotted by: Carlin Gyorffy, file location: r:\p\322142-001CF400.dwg, plot date: 10/05/2024 5:04 PM, Sheet: 8 of 8 Sheets

Rev	Amendments	Approved	Date
A	PRELIMINARY ISSUE TO CLIENT	AW	MAY 2024

Scale

System Certified

© Spiire Australia Pty Ltd All Rights Reserved
This document is produced by Spiire Australia Pty Ltd solely for the benefit of and use by the client in accordance with the terms of the retainer. Spiire Australia Pty Ltd does not and shall not assume any responsibility or liability whatsoever to any third party arising out of any use or reliance by third party on the content of this document.

16 BRIDGE STREET BENDIGO
VICTORIA 3550 AUSTRALIA T 61 3 5448 2500
spiire.com.au ABN 55 050 029 635

Designed
C GYORFFY

Authorised
A WILKIE

Checked
M RULE

Date
MAY 2024

IRONBARK ROAD STAGE 1
101/103 IRONBARK RD, MUSWELLBROOK
FUNCTIONAL LAYOUT PLAN
TURNING TEMPLATES - SHEET 2
MUSWELLBROOK SHIRE COUNCIL
FREEDOM DEVELOPMENT GROUP PTY LTD

Dwg No
322142-001CF401

Rev
A