

**Muswellbrook Recycled Water Treatment Works: Skellatar Stock Route, Muswellbrook 2333**

**Licence Period: 1 March to 28 February**

### Discharge and Volume Monitoring Data 2025-2026

Frequency - Daily during any discharge

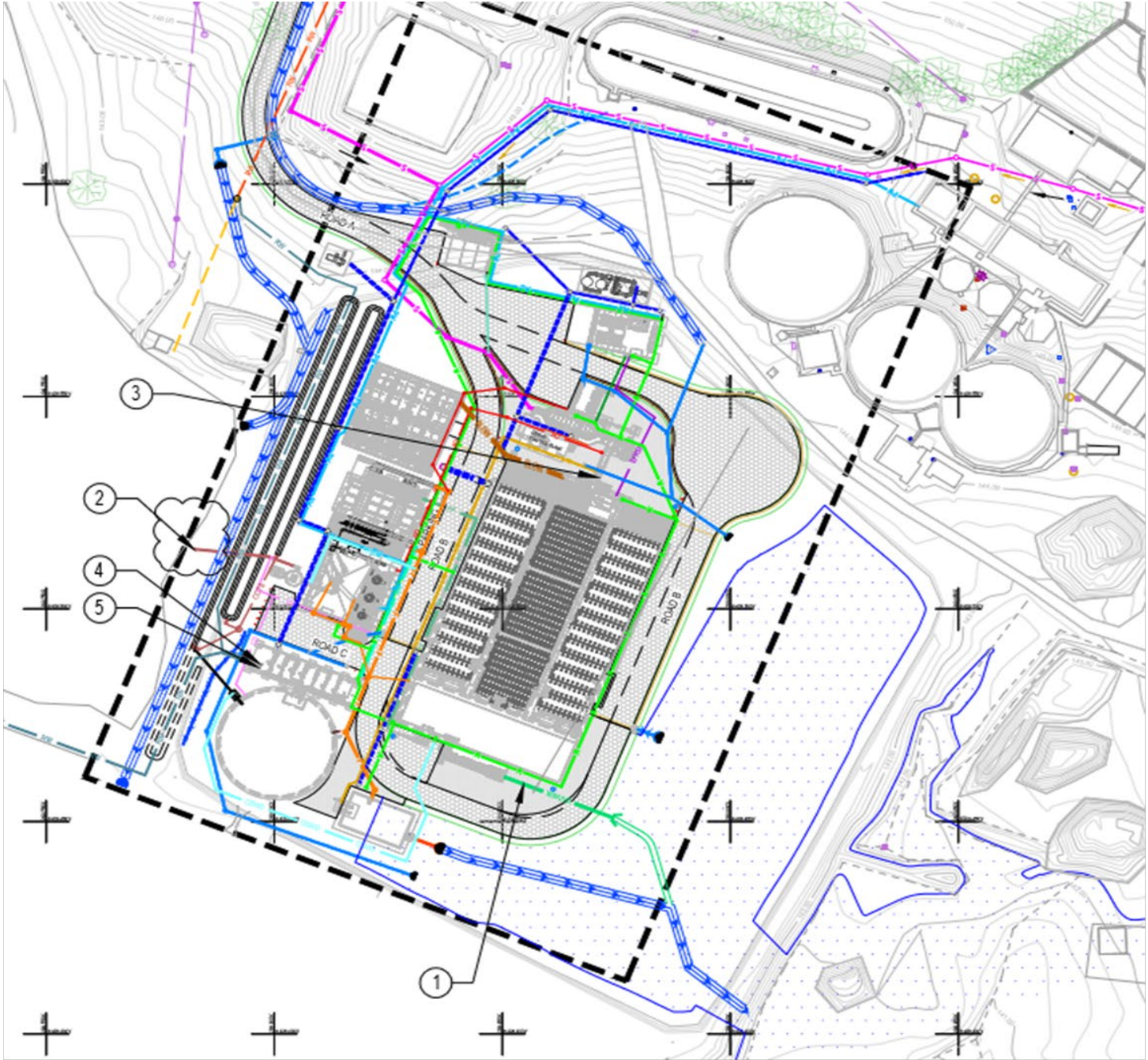
**Method:** Representative Sample

					RESULTS						
Sampling Point	Measurement Date	Date Sampled	Results Received	Date Published	Oil and Grease (mg/l)	pH (as units pH)	Total Suspended Solids (measured in mg/l)	Biochemical Oxygen Demand (measured in mg/l)	Faecal Coliforms (measured as cfu/100-ml)	Nitrogen (Total) (measured as mg/l)	Phosphorus (Total) (measured as mg/l)
<b>1 - Wet Weather Discharge*</b>  <b>(Wet Weather UV discharge)</b>	Mar-25	Nil									
	Apr-25	Nil									
	May-25										
	Jun-25										
	Jul-25										
	Aug-25										
	Sep-25										
	Oct-25										
	Nov-25										
	Dec-25										
	Jan-26										
	Feb-26										
	Mar-26										

[illegible]

Sampling Point	Measurement Date	Volume monitoring (kl/month)
<b>3 - Total Volume monitoring*</b>  <b>(Influent Volume)</b>	Mar-25	82,546
	Apr-25	69,592
	May-25	
	Jun-25	
	Jul-25	
	Aug-25	
	Sep-25	
	Oct-25	
	Nov-25	
	Dec-25	
	Jan-26	
	Feb-26	
	Mar-26	

Sampling Point	Measurement Date	Volume monitoring (kl/month)
<b>4 - Volume monitoring*</b>  <b>(Mt Arthur Supply)</b>	Mar-25	68,877
	Apr-25	67,986
	May-25	
	Jun-25	
	Jul-25	
	Aug-25	
	Sep-25	
	Oct-25	
	Nov-25	
	Dec-25	
	Jan-26	
	Feb-26	
	Mar-26	





Sampling Point	Measurement Date	Volume monitoring (kl/month)
5 - Volume monitoring* (Golf Course Supply)	Mar-25	7,204
	Apr-25	2,957
	May-25	
	Jun-25	
	Jul-25	
	Aug-25	
	Sep-25	
	Oct-25	
	Nov-25	
	Dec-25	
	Jan-26	
	Feb-26	
	Mar-26	



\*Sampling Point

- 1
- Monitoring of discharge from the wet weather UV system at coordinates 299854, 6426459 (Easting, Northing) located at the south-east corner of the IDEA tanks, shown as '1' in Figure 1.
- 2
- Monitoring of discharge overflow from CCT after dry weathr UV into Emergency Storage Pond 3, at coordinates 299782, 6426514 (Easting, Northing), shown as "2" in Figure 1.
- 3
- Monitoring of inflow to the plant, at coordinates 299870, 6426531 (Easting, Northing), shown as "3" in Figure 1.
- 4
- Monitoring at the Mt Arthur Coal Mine pump station, at coordinates 299797, 6426487 (Easting, Northing) located in the south-western corner, shown as "4" in Figure 1.
- 5
- Monitoring at the Muswellbrook Golf Course pump station, on the north-western side of the Bayswater reuse pond, at coordinates 299796, 6426486 (Easting, Northing), shown as "5" in Figure 1.